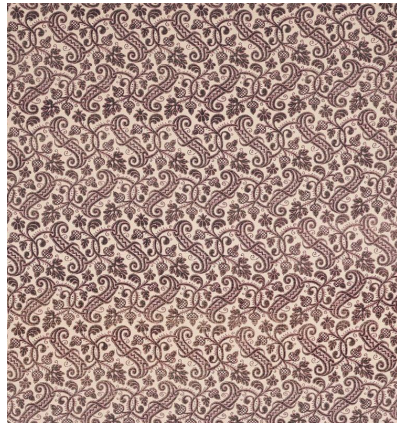
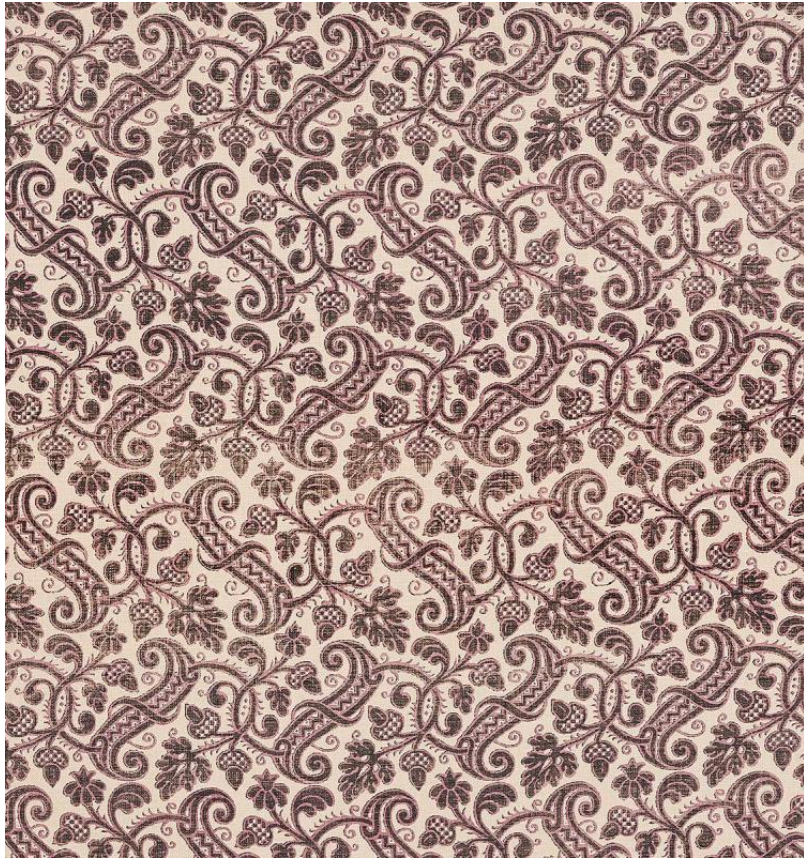


◆ ROBERT KIME ◆

TURIN MINOR

0772



The design of this print is based on a Piedmontese 17th Century panel and is available in two scales.

Material: 100% Linen

Pattern Repeat: V: 38 cm (15 in) H: 22 cm (8.7 in) , **Joining Width:** 132 cm (52 in) , **Printed Width:** 141 cm (55.5 in) ,

Width: Our fabrics are produced with a minimum of 2 cm selvedge on either side of the design