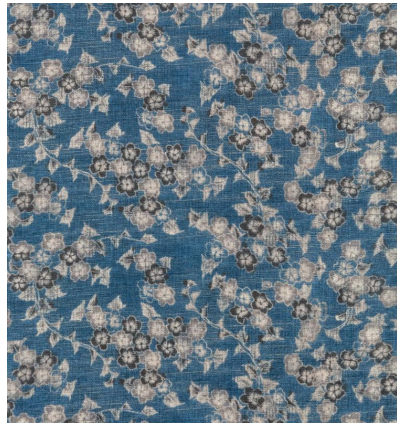
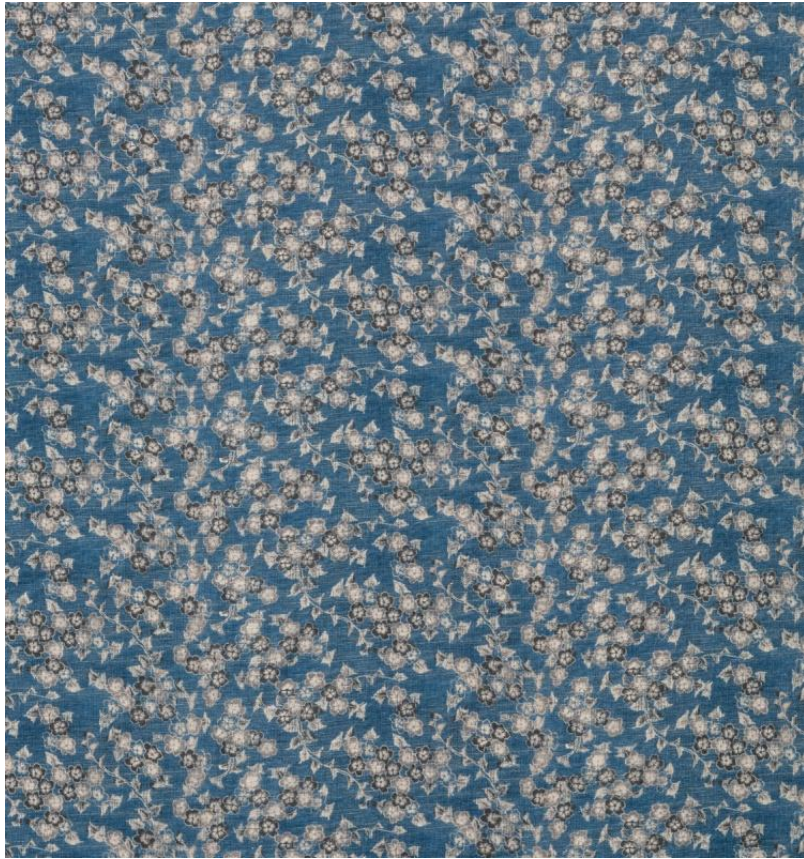


◆ ROBERT KIME ◆

TSUBAKI

TBRK0939



'Tsubaki' or camellia flower is based on a fragment found by Robert during his visit to Japan. A charming floral element, outlined in black which adds a touch of grace and elegance to the fabric.

Material: 100% Linen

Joining Width: 137.5 cm - 54 1/8 in , **Width:** 146 cm , **Printed Width:** 138.5 cm - 54 1/2 in ,

Pattern Repeat: V: 12 cm - 4 3/4 in, H: 28 cm - 11 in ,

Robert Kime Showroom, 190 - 192 Ebury Street, London, SW1W 8UP, England

T: +44 (0)20 7831 6066

www.robertkime.com