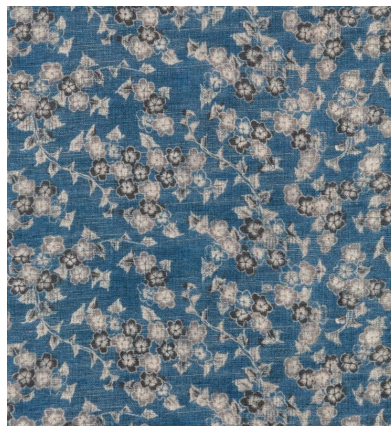
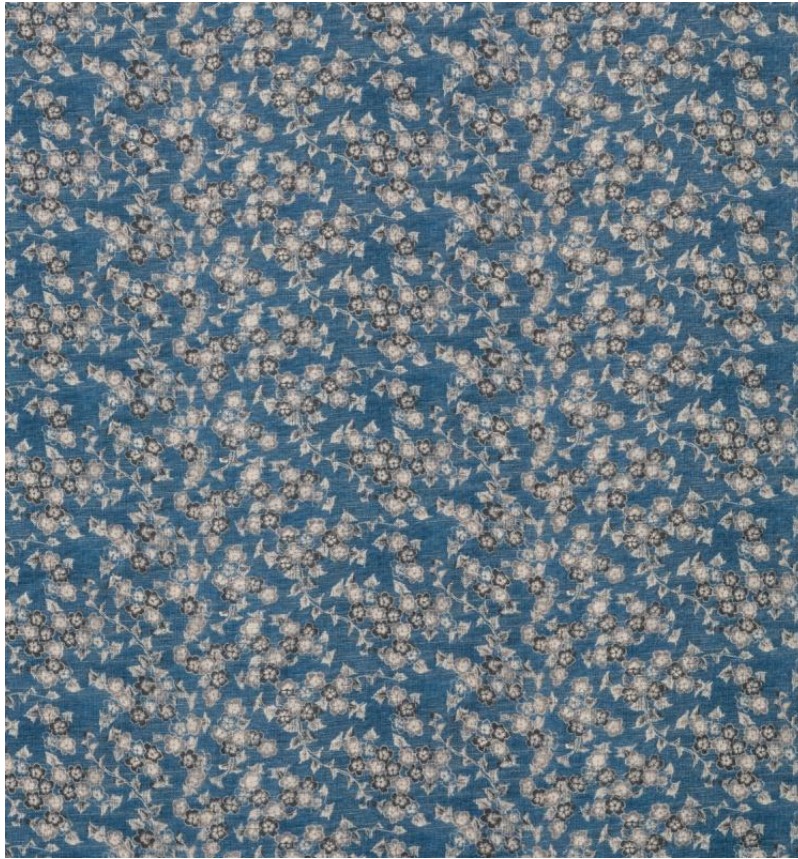


# ◆ ROBERT KIME ◆

## TSUBAKI

TBRK0939



'Tsubaki' or camellia flower is based on a fragment found by Robert during his visit to Japan. A charming floral element, outlined in black which adds a touch of grace and elegance to the fabric.

**Material:** 100% Linen

**Joining Width:** 137.5 cm - 54 1/8 in , **Width:** 146 cm , **Printed Width:** 138.5 cm - 54 1/2 in ,

**Pattern Repeat:** V: 12 cm - 4 3/4 in, H: 28 cm - 11 in ,