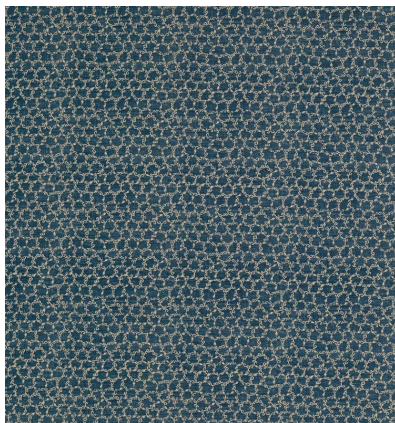


◆ ROBERT KIME ◆

TE
TBRK0918



This traditional pattern is known as an Amaryu in Japan where 'ama' means rain and '(ame)ryu' means dragon. The origin of this design dates back to the late Edo period (1860's). The pattern is created by a series of little dragons which move in a circle. The hairy head of the dragon looks like a hand, hence the name 'Te' which means hand in Japanese.

Material: 90% Cotton, 10% Linen

Width: 147 cm - 57 7/8 in , **Joining Width:** 135.5 cm , **Printed Width:** 141 cm - 55 1/2 in ,

Pattern Repeat: V: 17cm, H: 21cm ,

Robert Kime Showroom, 190 - 192 Ebury Street, London, SW1W 8UP, England

T: +44 (0)20 7831 6066

www.robertkime.com