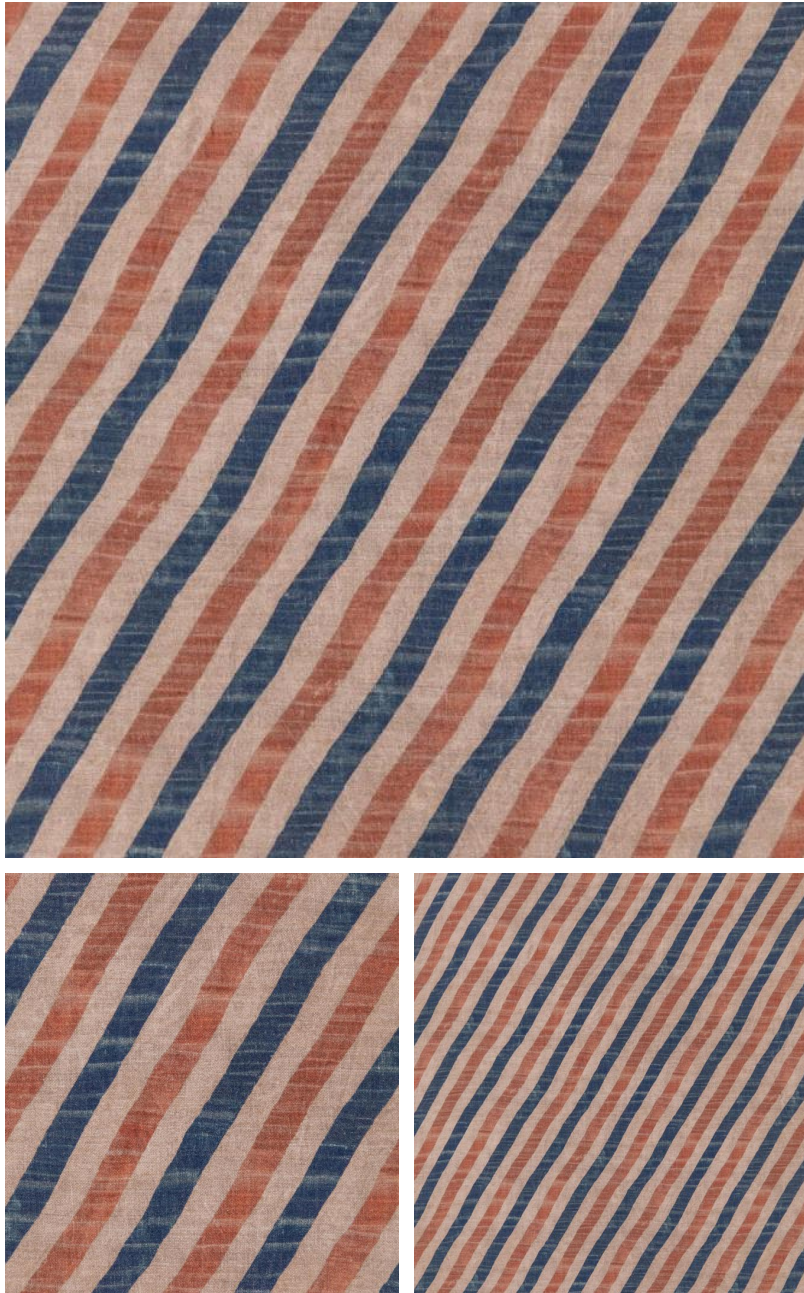


◆ ROBERT KIME ◆

TAZUNA

TBRK0923



A Japanese 'Tazuna' is a decorative rope attached to the reins to dress or decorate a horse for a traditional ceremony or festival. The traditional pattern on a Tazuna is of diagonal lines. Please note: the horizontal repeat is rather large spanning almost the full width of the fabric, please enquire for more information.

Material: 56% Cotton, 44% Linen

Width: Our fabrics are produced with a minimum of 2 cm selvedge on either side of the design, **Joining Width:** 131 cm (51.6 in), **Printed Width:** 142 cm (55.9 in), **Pattern Repeat:** V: 73 cm (28.8 in) H: 72 cm (28.3 in),