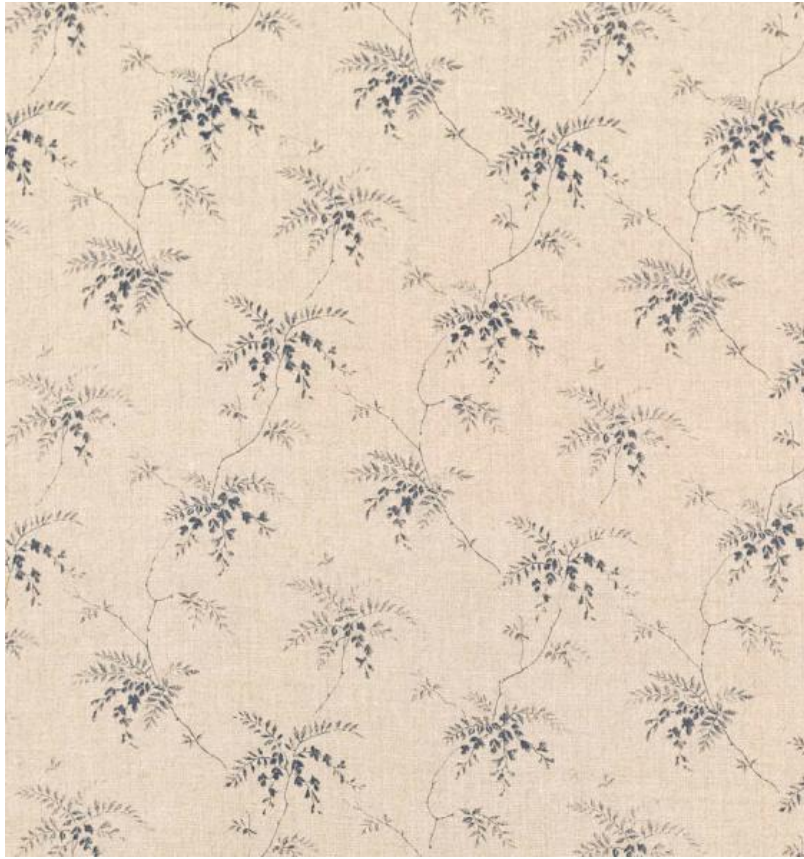


◆ ROBERT KIME ◆

SWEET PEA

0461



A simple cottage design, printed on unbleached linen to create a delicate and interesting fabric.

Material: 100% Linen

Width: Our fabrics are produced with a minimum of 2 cm selvedge on either side of the design, **Pattern**

Repeat: V: 20 cm (7.9 in) H: 26.5 cm (10.4 in), **Joining Width:** 136 cm (53.5 in),

Printed Width: 142.5 cm (56.1 in),