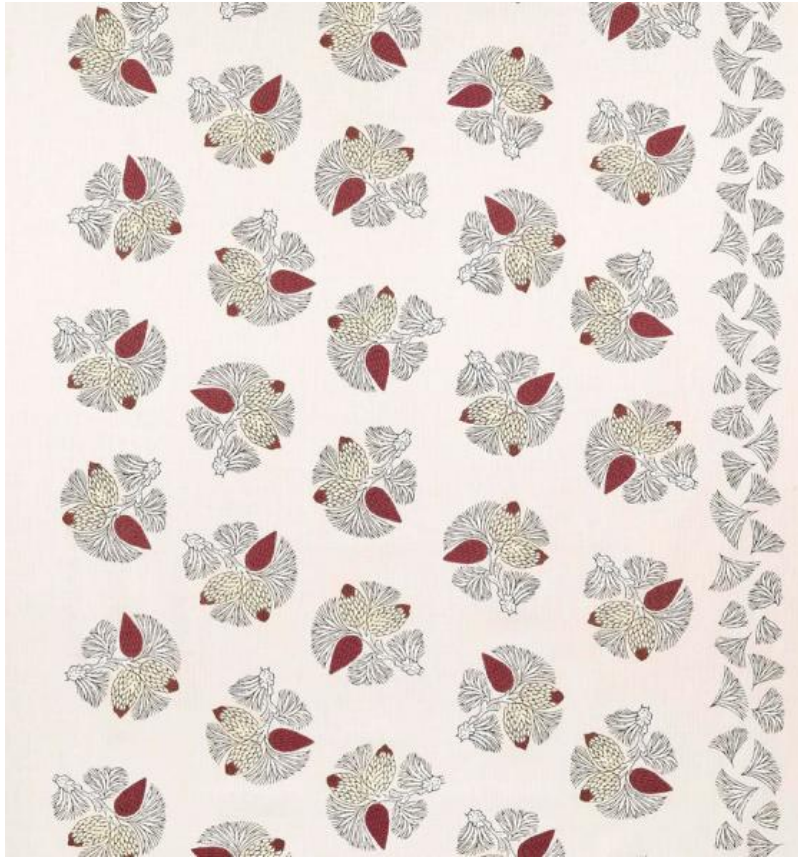


◆ ROBERT KIME ◆

STONE PINE

0704



Inspired by an original woodblock print often found throughout the old Ottoman Empire, this small scale Kandelli fabric features sprigs of pinecones and needles on a linen backcloth.

Material: 100% Linen

Width: Our fabrics are produced with a minimum of 2 cm selvedge on either side of the design, **Pattern**

Repeat: V: 84 cm (33.1 in) H: N/A , **Joining Width:** 119 cm (46.9 in) ,

Border: 13 cm (5.1 in) , **Printed Width:** 132 cm (51.9 in) ,