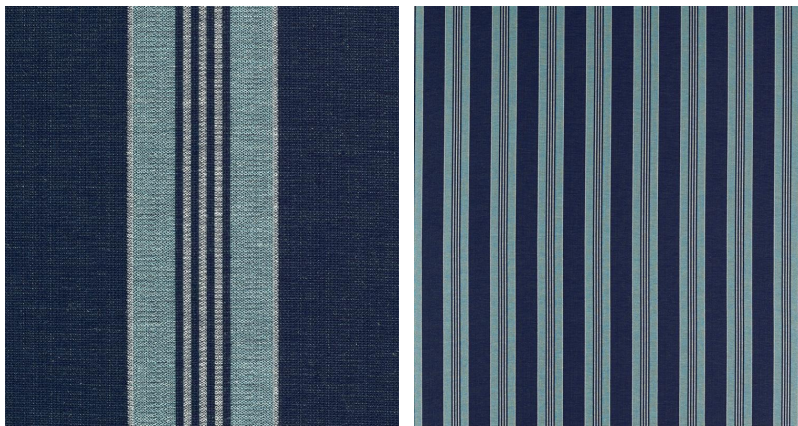


◆ ROBERT KIME ◆

SERAT STRIPE

0926



Named for serit, Turkish for stripe with a nod to the verb serō - to join or weave, this fabric is inspired by a loosely woven antique curtain. In hues of blue, Serat is also reversible.

Material: 57% Viscose, 24% Cotton, 9% Flax

Width: 136 cm (53.5 in) , **Pattern Repeat:** V: N/A H: 15.5 cm (6.1 in) , **Joining Width:** 126 cm (49.6 in) ,