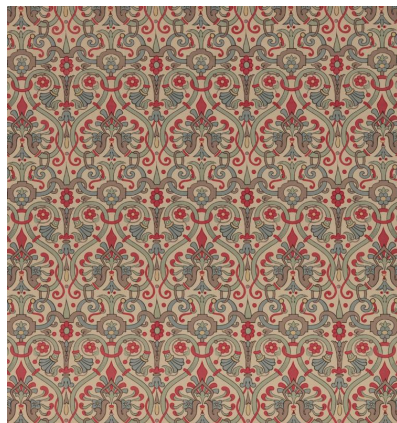


◆ ROBERT KIME ◆

RABY RED

0445



Developed from a fragment bought in a sale at Raby Castle, Durham. Redesigned by Crace in the C19th.

Material: 100% Linen

Width: 146 cm - 57 1/2 in , **Pattern Repeat:** V: 44 cm - 17 5/16 in, H: 30cm - 11 3/4 in , **Joining Width:** 127 cm - 50 in ,

Printed Width: 133.5 cm - 52 9/16 in ,

Robert Kime Showroom, 190 - 192 Ebury Street, London, SW1W 8UP, England

T: +44 (0)20 7831 6066

www.robertkime.com