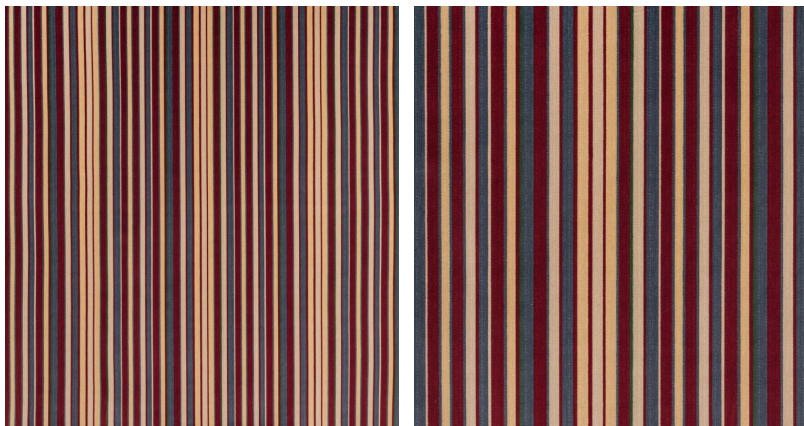


# ◆ ROBERT KIME ◆

## PALMYRA RED

0356A2



Inspired by a North West Persian silk stripe.

**Material:** 84% Cotton, 16% Polyester

**Width:** Our fabrics are produced with a minimum of 2 cm selvedge on either side of the design, **Pattern**

**Repeat:** V: N/A H: 68.5 cm (27 in) , **Joining Width:** 135 cm (53.1 in) ,

**Printed Width:** 137 cm (53.9 in) ,