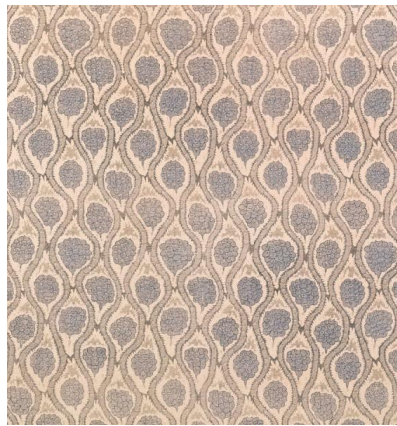
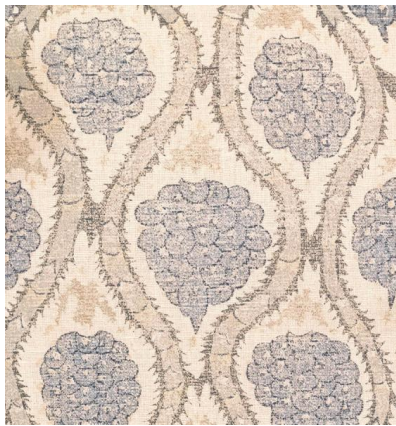
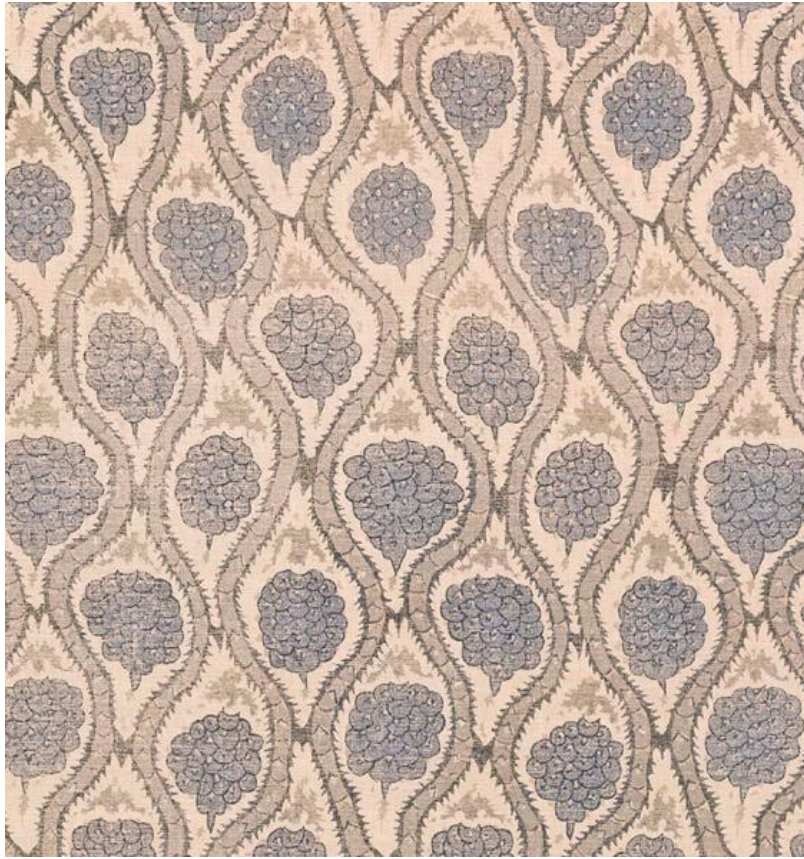


◆ ROBERT KIME ◆

PALI

0517



A variant of a very ancient needlework design, the pattern of which is found in many forms throughout the Middle East.

Material: 100% Silk

Width: Our fabrics are produced with a minimum of 2 cm selvedge on either side of the design., **Pattern**

Repeat: V: 71 cm (28 in) H: 32 cm (12.6 in), **Joining Width:** 132 cm (52 in),

Printed Width: 134 cm (52.75 in),