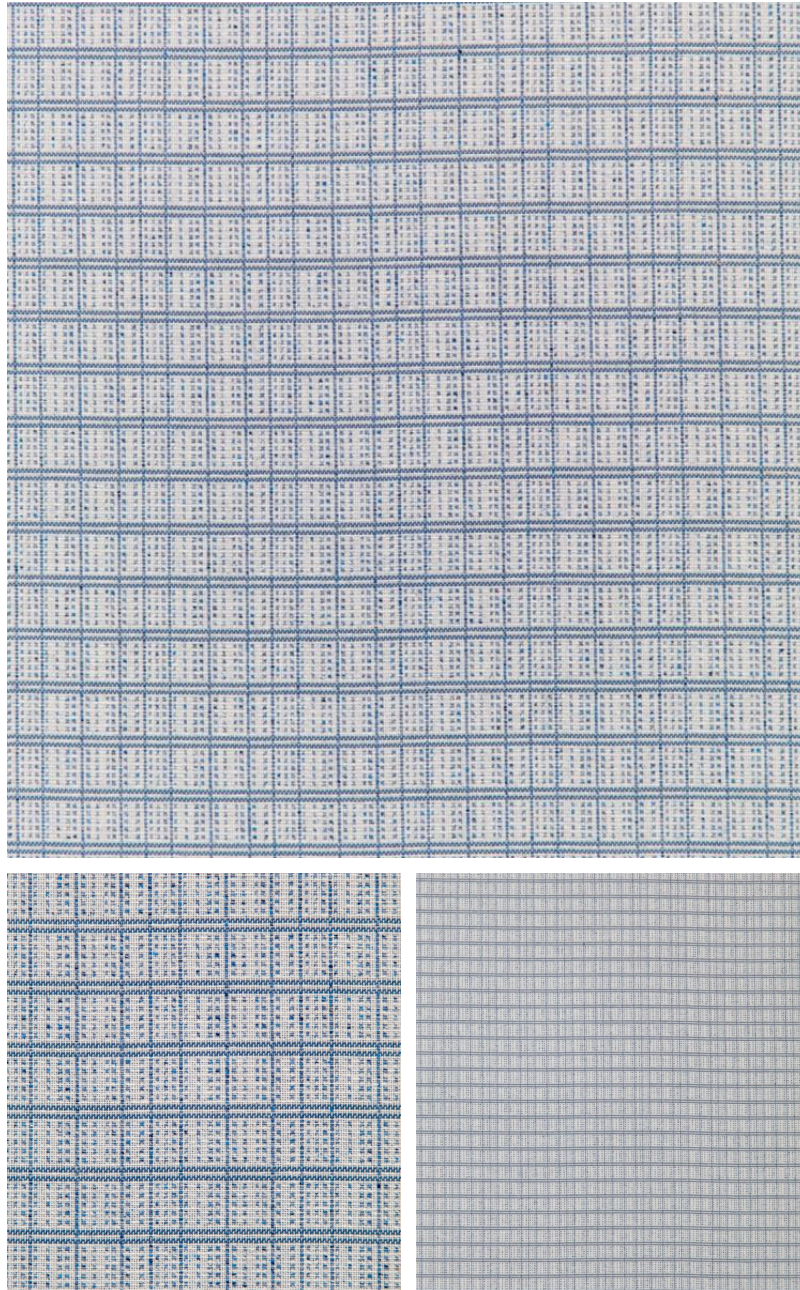


◆ ROBERT KIME ◆

OTANI BLUE

TBRK0479



This blue and white cotton/silk weave creates a checked pattern inspired by a decorative light woven border found on the original fragment of our Chou design.

Material: 57% Cotton, 43% Silk

Width: Our fabrics are produced with a minimum of 2 cm selvedge on either side of the design, **Joining Width:** 128 cm (50.4 in) , **Pattern Repeat:** V: 2.5 cm (1 in) H: 6 cm (2.4 in) ,

Robert Kime Showroom, 190 - 192 Ebury Street, London, SW1W 8UP, England

T: +44 (0)20 7831 6066

www.robertkime.com