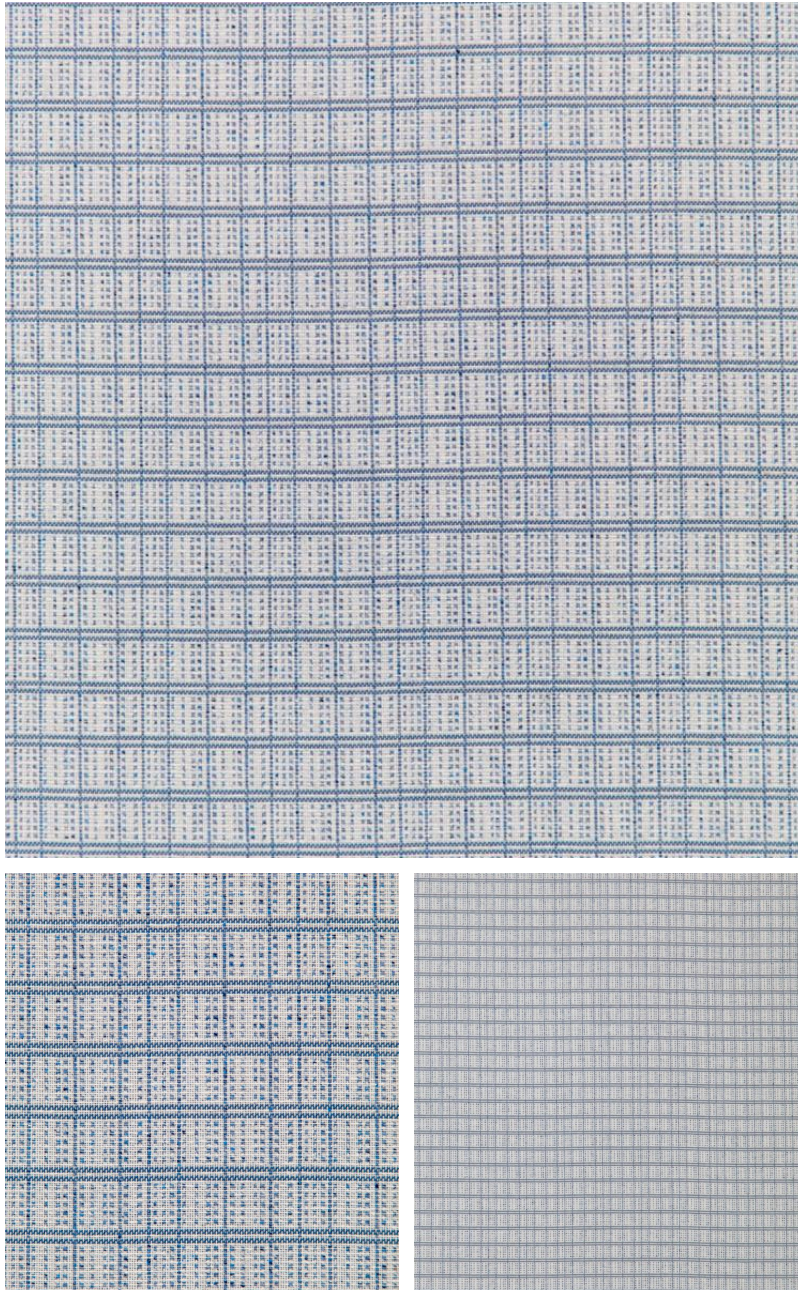


◆ ROBERT KIME ◆

OTANI

TBRK0479



This blue and white cotton/silk weave creates a checked pattern inspired by a decorative light woven border found on the original fragment of our Chou design.

Material: 57% Cotton, 43% Silk

Width: 130.5 cm (51.4 in) , **Pattern Repeat:** V: 2.5 cm (1 in) H: 6 cm (2.4 in) , **Joining Width:** 128 cm (50.4 in) ,