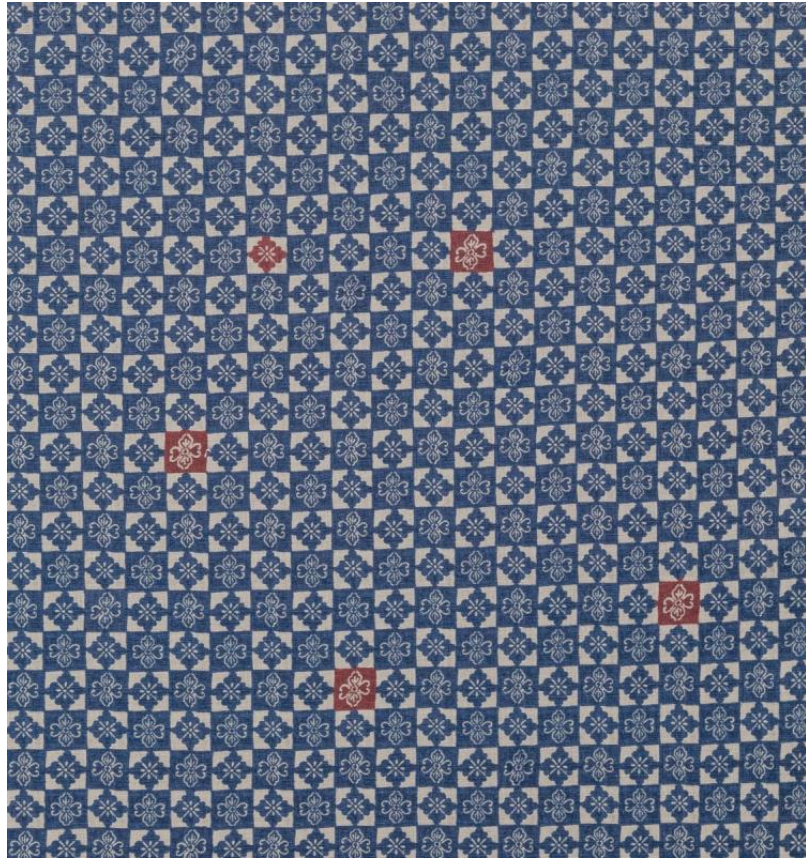


# ◆ ROBERT KIME ◆

## OSHIBANA

TBRK0936



'Oshibana' or pressed flowers is based on a Meiji period textile fragment found in Kyoto. It is a variation on a floral Hanabishi motif. The reference fabric fragment has likely come from a theatre or festival banner and this motif is popular in Japan to this day.

**Material:** 100% Linen

**Joining Width:** 137 cm - 54 in , **Width:** 146 cm , **Printed Width:** 138 cm - 54 3/8 in ,

**Pattern Repeat:** V: 56.5 cm - 22 1/4 in, H: 69 cm - 27 1/8 in ,