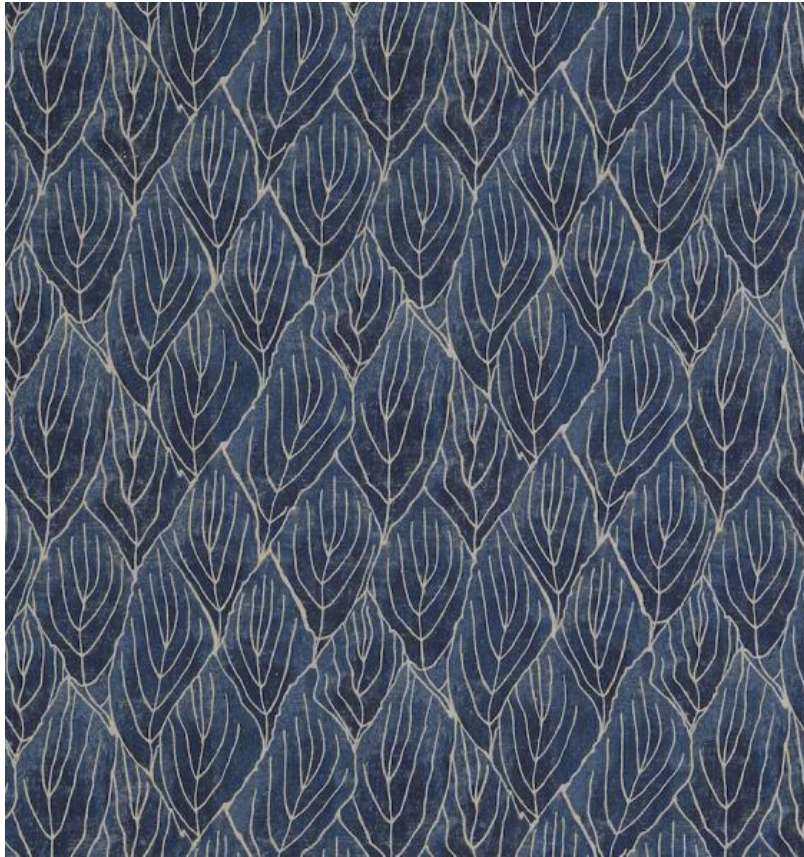


# ◆ ROBERT KIME ◆

## OBA BLUE

TBRK0907



Inspired by an antique pair of trousers that Robert found in Kyoto, the pattern 'Oba' or leaf, in this case, resembles a basil leaf. The digitally printed fabric showcases an abstract outline of white leaves on an indigo blue cloth. Indigo has been treasured by the Japanese since ancient times as it was believed to contain substances which repelled insects and contained antibacterial properties.

**Material:** 100% Linen

**Pattern Repeat:** V: 26.5 cm (10.4 in) H: 28 cm (11 in) , **Joining Width:** 138 cm (54.3 in) , **Printed Width:** 141 cm (55.5 in) ,

**Width:** Our fabrics are produced with a minimum of 2 cm selvedge on either side of the design,