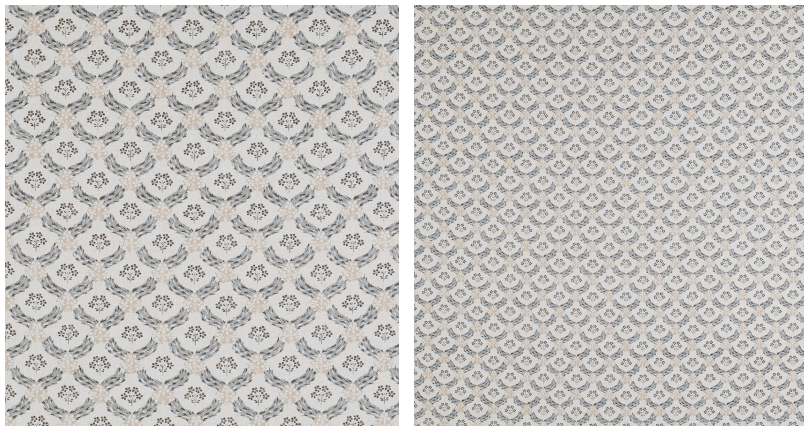


# ◆ ROBERT KIME ◆

## MYRTLE

0381



Based on a fragment from Robert's archive, this printed fabric showcases floral garlands in a symmetrical pattern adorned with posies.

**Material:** 50% Viscose, 33% Cotton, 11% Linen, 6% Polyester

**Width:** Our fabrics are produced with a minimum of 2 cm selvedge on either side of the design., **Pattern**

**Repeat:** V: 65.5 cm (25.7 in) H: 22.5 cm (8.9 in), **Joining Width:** 135.5 cm (53.3 in),

**Printed Width:** 136.5 cm (53.7 in),