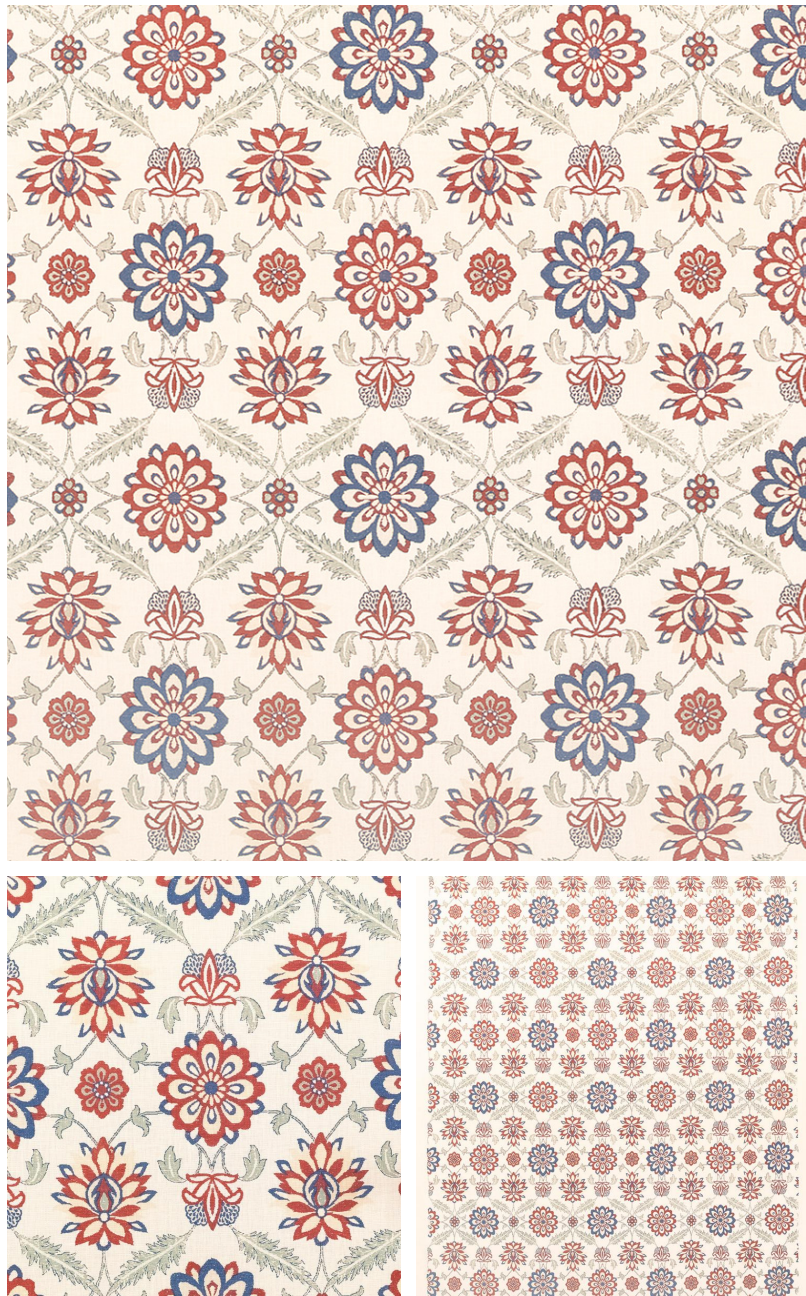


# ◆ ROBERT KIME ◆

## MUGHAL FLOWER

0454



Based on an Indian chain stitch needlework, printed to retain the impression of the stitches.

**Material:** 100% Linen

**Width:** Our fabrics are produced with a minimum of 2 cm selvedge on either side of the design, **Pattern**

**Repeat:** V: 44 cm (17.3 in) H: 41 cm (16.1 in), **Joining Width:** 126.5 cm (49.8 in),