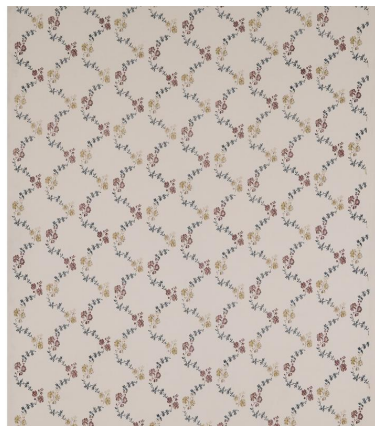


◆ ROBERT KIME ◆

MAY ON MUSLIN

0927



An antique English curtain lends its inspiration to May on Muslin. Floral garlands, which climb vertically are screen printed on a lightweight cotton cloth. This fabric lends itself wonderfully for loose-lined curtains or lampshades.

Material: 100% Cotton

Width: 151 cm - 59 29/64 in , **Pattern Repeat:** V: 52.5 cm H: 43 cm - 16 59/64 in (1/2 drop repeat) , **Joining**

Width: 135 cm - 53 5/32 in ,

Printed Width: 139 cm ,