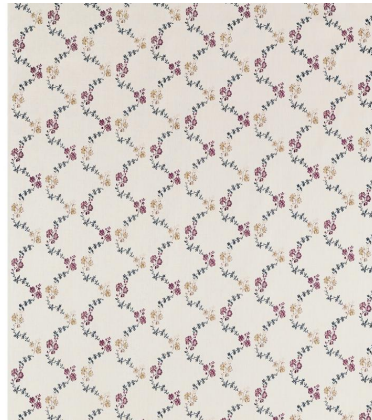


# ◆ ROBERT KIME ◆

## MAY ON LINEN

0928L



An antique English curtain lends its inspiration to May on Linen. Floral garlands, which climb vertically are screen printed on a heavier linen fabric suitable for upholstery and curtains to name a few applications.

**Material:** 100% Linen

**Width:** Our fabrics are produced with a minimum of 2 cm selvedge on either side of the design, **Pattern**

**Repeat:** V: 52.5 cm (20.7 in) H: 43 cm (16.9 in) , **Joining Width:** 133 cm (52.4 in) ,

**Printed Width:** 139 cm (54.7 in) ,