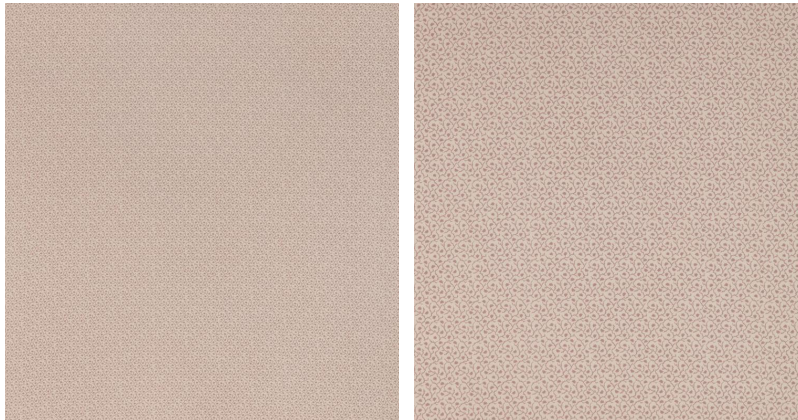
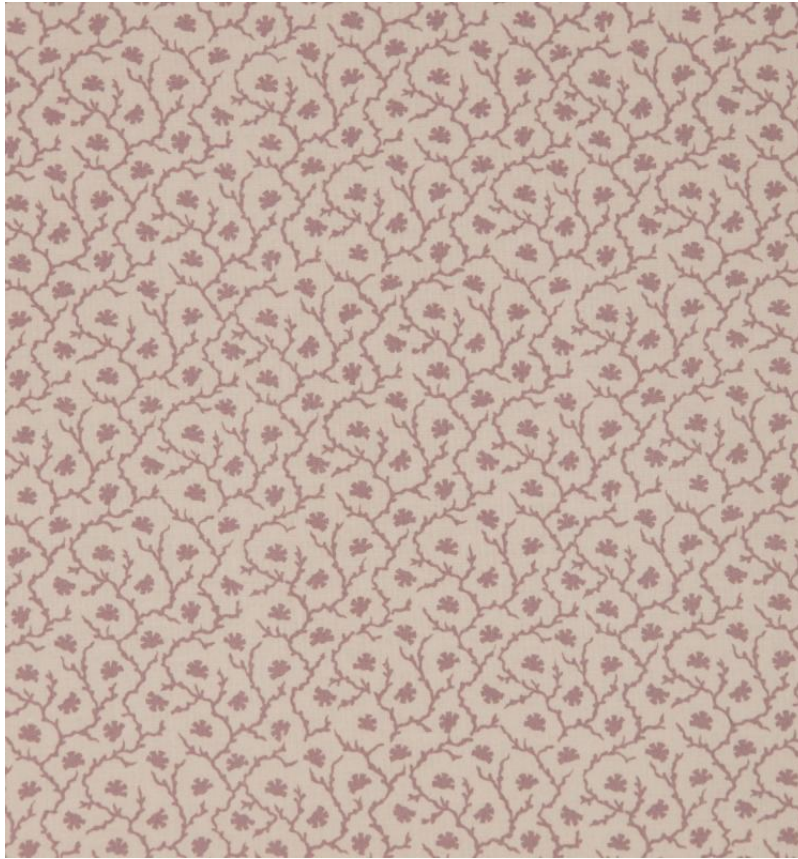


◆ ROBERT KIME ◆

MAPLE LINING ROSE

0960E



This delicate patterned lining was discovered purely by chance when an antique chair was stripped for re-upholstery and this lovely design was found underneath. Available in a selection of colourways.

Material: 100% Cotton

Joining Width: 136 cm (53.5 in) , **Pattern Repeat:** V: 16 cm (6.3 in) H: 11 cm (4.3 in) , **Width:** Our fabrics are produced with a minimum of 2 cm selvedge on either side of the design. ,

Printed Width: 137 cm (53.9 in)