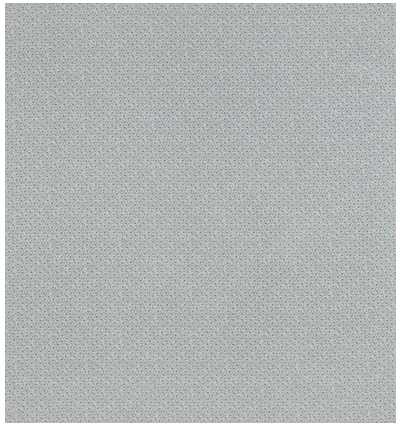


# ◆ ROBERT KIME ◆

## MAPLE LINING GREEN

0960B



This delicate patterned lining was discovered purely by chance when an antique chair was stripped for re-upholstery and this lovely design was found underneath. Available in a selection of colourways.

**Material:** 100% Cotton

**Width:** Our fabrics are produced with a minimum of 2 cm selvedge on either side of the design, **Pattern**

**Repeat:** V: 16 cm (6.3 in) H: 11 cm (4.3 in), **Joining Width:** 136 cm (53.5 in),

**Printed Width:** 137 cm (53.9 in),