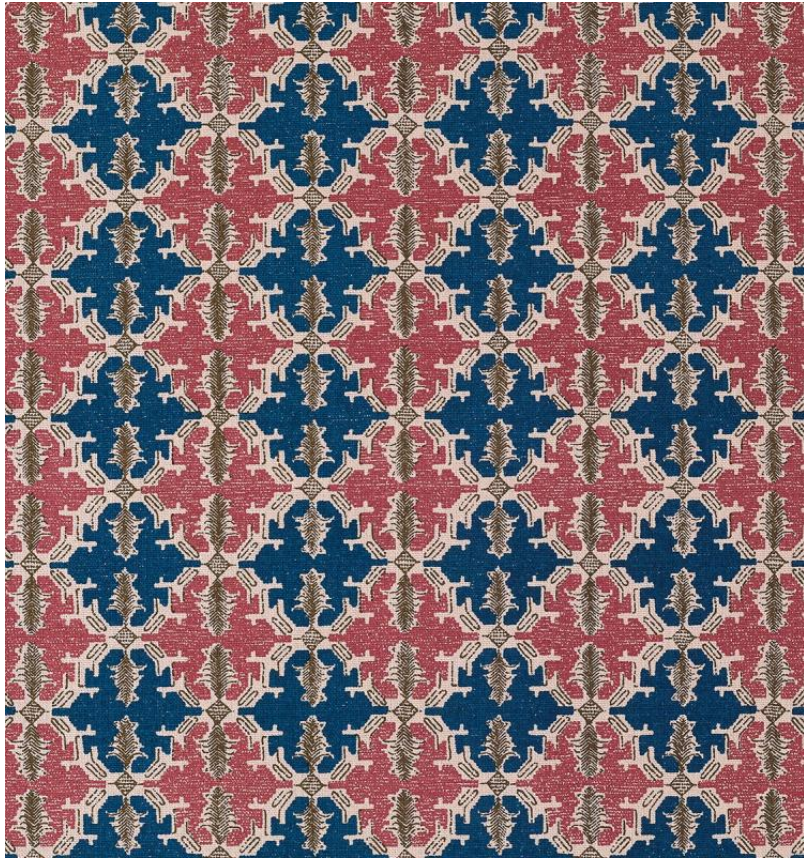


◆ ROBERT KIME ◆

LYNXIA

0496



A bold and colourful design, inspired by an early 19th Century Chinese silk embroidery fragment.

Material: 100% Silk

Width: Our fabrics are produced with a minimum of 2 cm selvedge on either side of the design., **Pattern**

Repeat: V: 8.5 cm (3.3 in) H: Panel 10.5 cm (4.1 in) , **Joining Width:** 119 cm (46.9 in) ,

Border: 14 cm (5.5 in) , **Printed Width:** 133.5 cm (51.6 in) ,