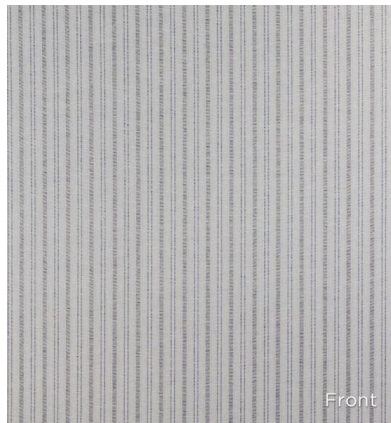
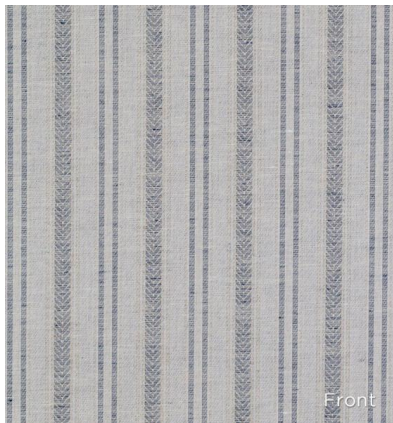
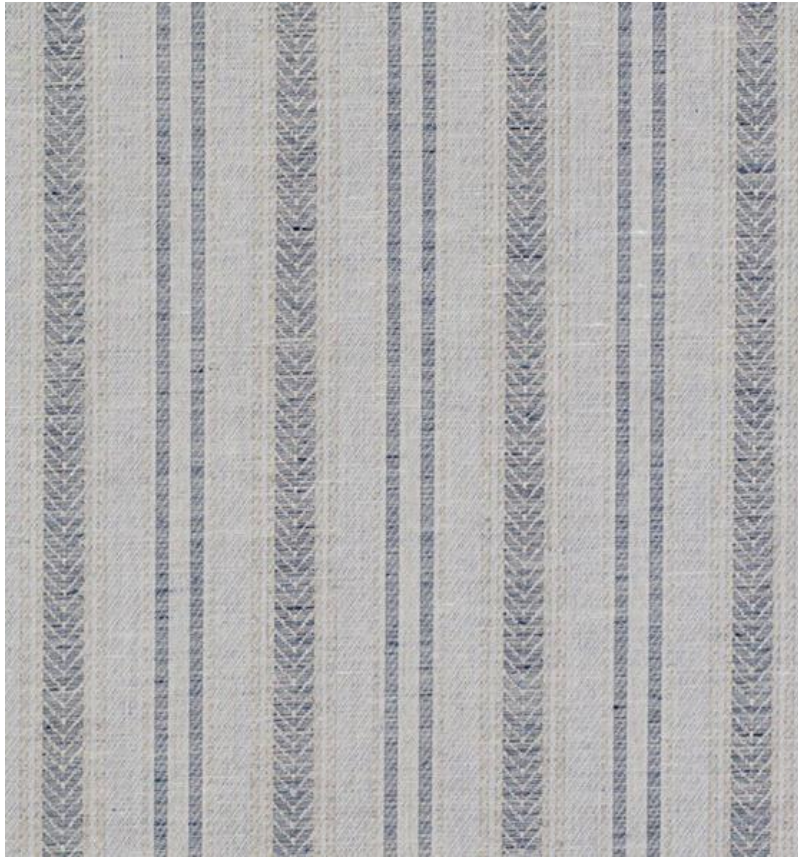


◆ ROBERT KIME ◆

LARSSON LINEN DENIM

0678



Adapted from an antique faded Swedish ticking from Robert's document archive. This fabric is a finely detailed weave and is reversible, in eight colourways.

Material: 57% Linen, 43% Cotton

Width: 137 cm (53.9 in) , **Pattern Repeat:** V: N/A H: 6 cm (2.4 in) , **Joining Width:** 134.5 cm (53 in) ,