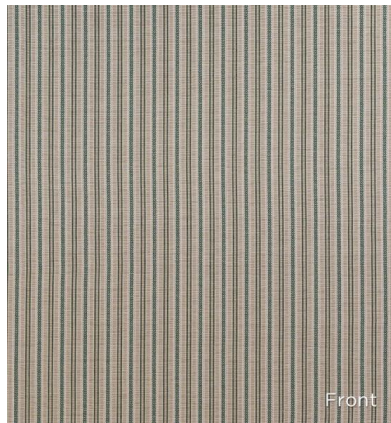
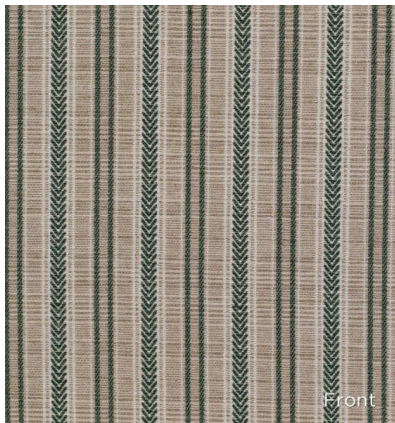


◆ ROBERT KIME ◆

LARSSON GREEN

0578



Adapted from an antique faded Swedish ticking from Robert's document archive. This fabric is a finely detailed weave and is reversible, in eight colourways.

Material: 62% Viscose, 20% Flax, 18% Cotton

Width: 130.5 cm (51.4 in) , **Pattern Repeat:** V: N/A H: 6 cm (2.4 in) , **Joining Width:** 127 cm (50 in) ,