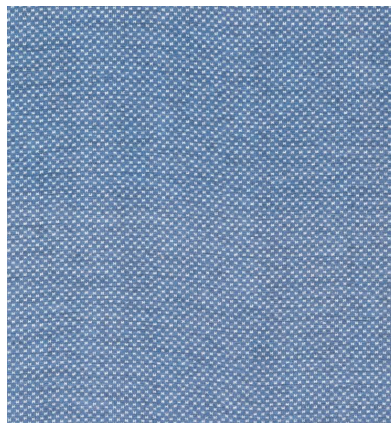
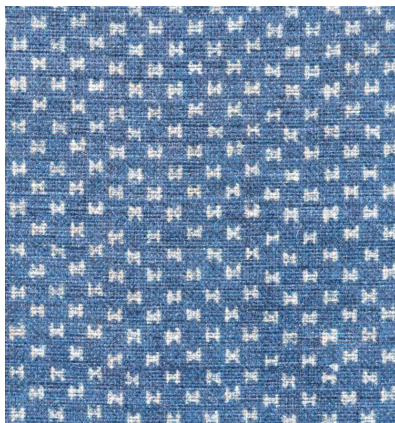


# ◆ ROBERT KIME ◆

KOMON

TBRK0935



Part of the Nara Collection, 'Komon', which translates to small gates, is an intricate semi-plain design inspired by a textile fragment created using the Katsuri technique. This technique is characterised by a distinct blurred appearance, contributing to its unique aesthetic.

**Material:** 100% Linen

**Width:** Our fabrics are produced with a minimum of 2 cm selvedge on either side of the design., **Joining**

**Width:** 137 cm (53.9 in) , **Printed Width:** 137 cm (53.9 in) ,