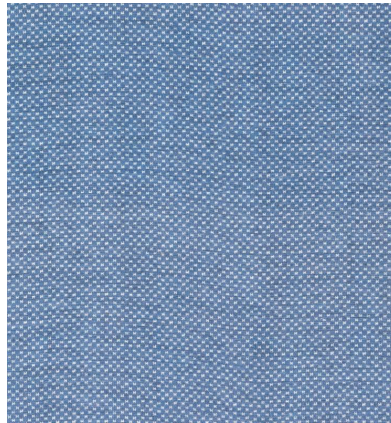
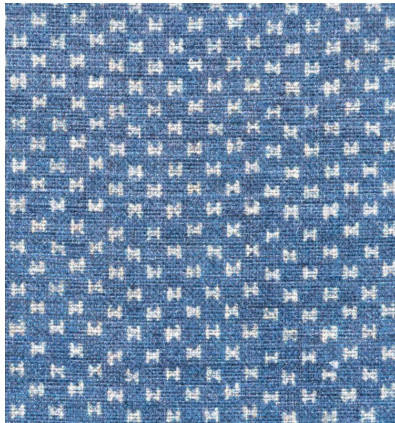


◆ ROBERT KIME ◆

KOMON

TBRK0935



‘Komon’, which translates to small gates, is an intricate semi-plain design inspired by a textile fragment created using the Katsuri technique. This technique is characterised by a distinct blurred appearance, contributing to its unique aesthetic.

Material: 100% Linen

Joining Width: 137 cm - 54 in , **Width:** 144 cm , **Printed Width:** 137 cm - 54 in ,

Pattern Repeat: V: N/A, H: N/A ,