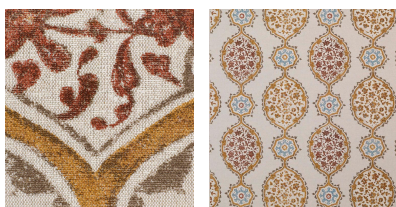
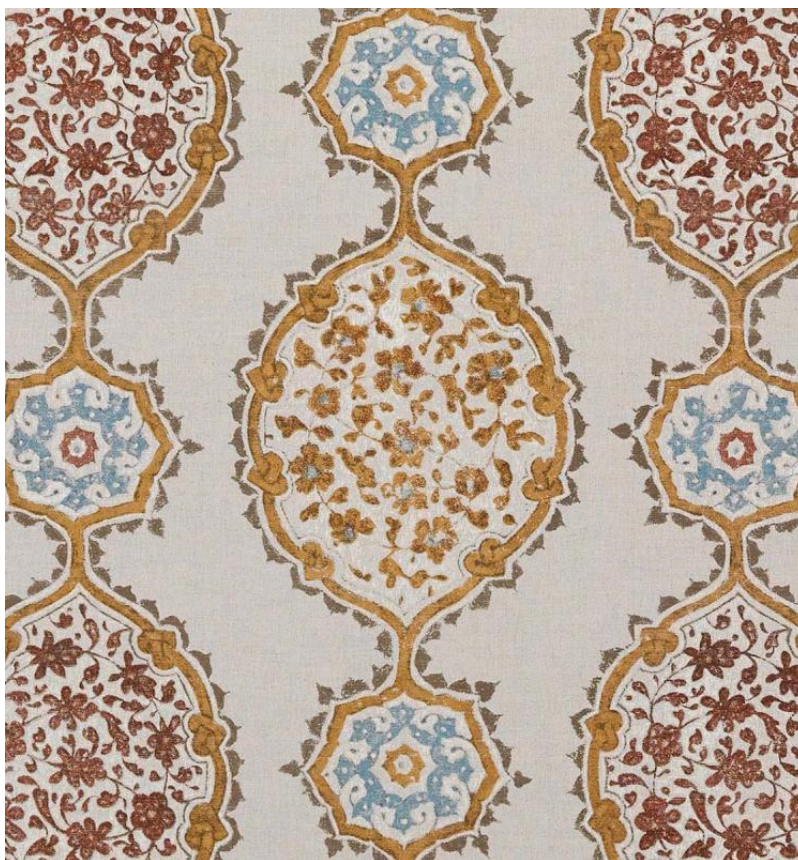




◆ ROBERT KIME ◆

IBRAHIM ON HEAVY LINEN

0511



Inspired by a domed, painted ceiling in the mosque built by Ibrahim Pasha in Central Anatolia.

Material: 54% Linen, 35% Cotton, 11% Polyamide , **Joining Width:** 137 cm - 53 15/16 in , **Printed Width:** 143 cm - 56 5/16 in , **Width:** 148 cm - 58 1/4 in , **Pattern Repeat:** 68 cm - 26 3/4 in

Robert Kime Showroom, 190 - 192 Ebury Street, London, SW1W 8UP, England

T: +44 (0)20 7831 6066

www.robertkime.com