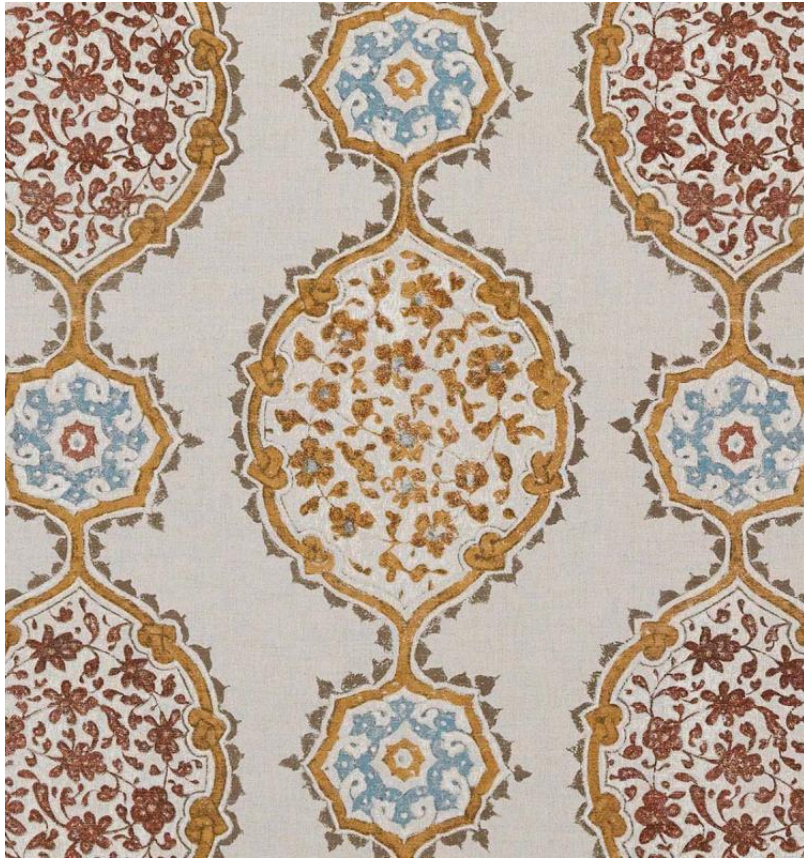


◆ ROBERT KIME ◆

IBRAHIM HEAVY LINEN

0511



Inspired by a domed, painted ceiling in the mosque built by Ibrahim Pasha in Central Anatolia.

Material: 54% Linen, 35% Cotton, 11% Polyamide

Width: Our fabrics are produced with a minimum of 2 cm selvedge on either side of the design, **Pattern**

Repeat: V: 66 cm (26 in) H: 68.5 cm (27 in), **Joining Width:** 133 cm (52.4 in),

Printed Width: 146 cm (57.5 in),