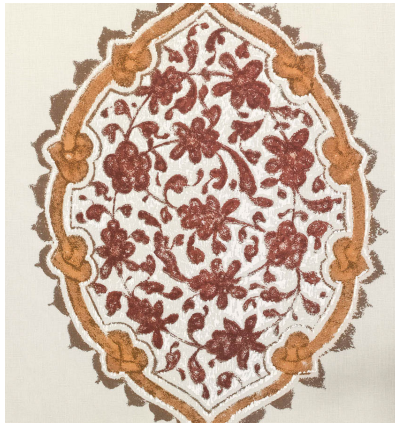


# ◆ ROBERT KIME ◆

IBRAHIM

0411



Inspired by a domed, painted ceiling in the mosque built by Ibrahim Pasha in Central Anatolia.

**Material:** 100% Linen

**Width:** Our fabrics are produced with a minimum of 2 cm selvedge on either side of the design, **Pattern**

**Repeat:** V: 66 cm (26 in) H: 68.5 cm (27 in) , **Joining Width:** 133 cm (52.4 in) ,

**Printed Width:** 144 cm (56.7 in) ,