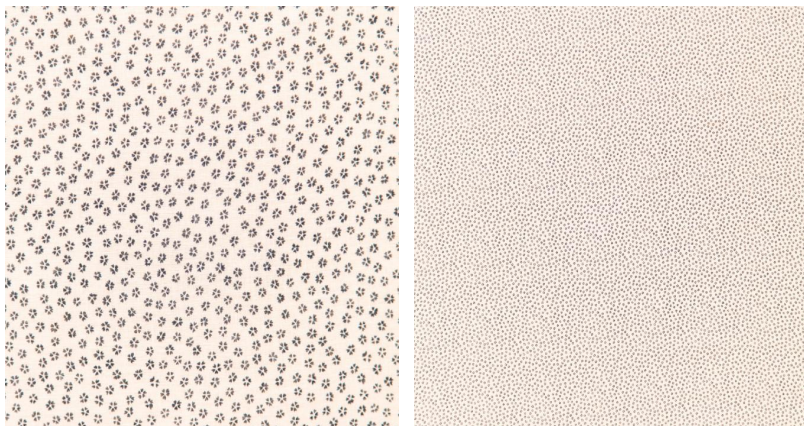
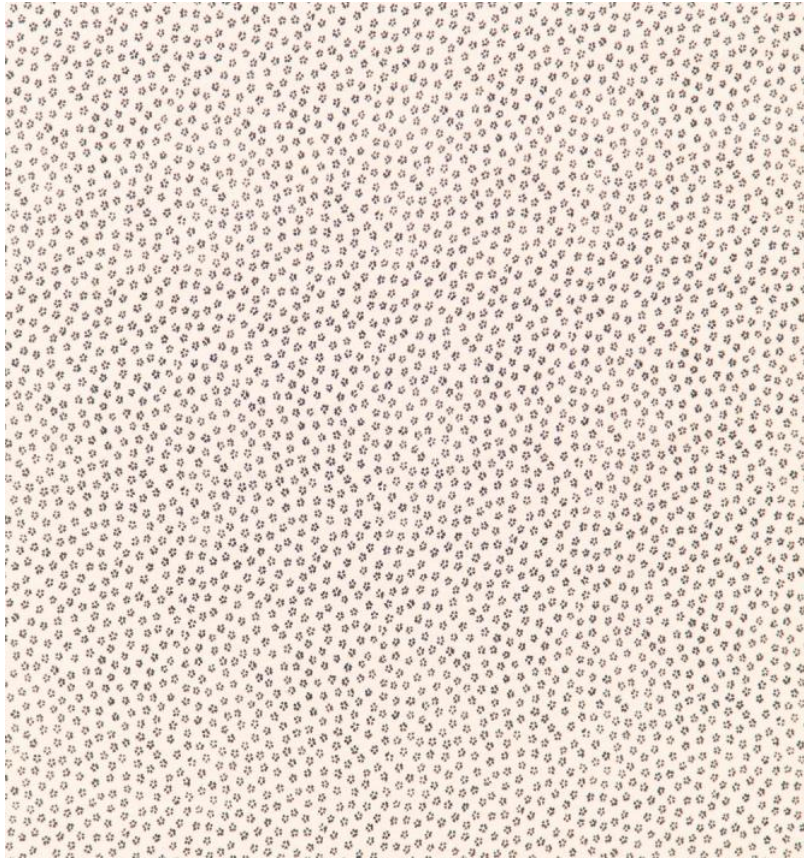


◆ ROBERT KIME ◆

HIZAKURA

TBRK0904



'Hizakura' or day cherry flower also celebrates the Japanese symbolism of cherry blossoms indicating a time of renewal and the transience of life. The inverse of 'Yozakura' this fabric was inspired by a fragment originating from the Edo period. This style of cotton print was also traditionally used to make 'Hakama', a type of Japanese trouser.

Material: 100% Linen

Pattern Repeat: V: 18.5 cm (7.3 in) H: 13.5 cm (5.3 in), **Joining Width:** 133 cm (52.5 in), **Printed Width:** 135 cm (53.1 in),

Width: Our fabrics are produced with a minimum of 2 cm selvedge on either side of the design