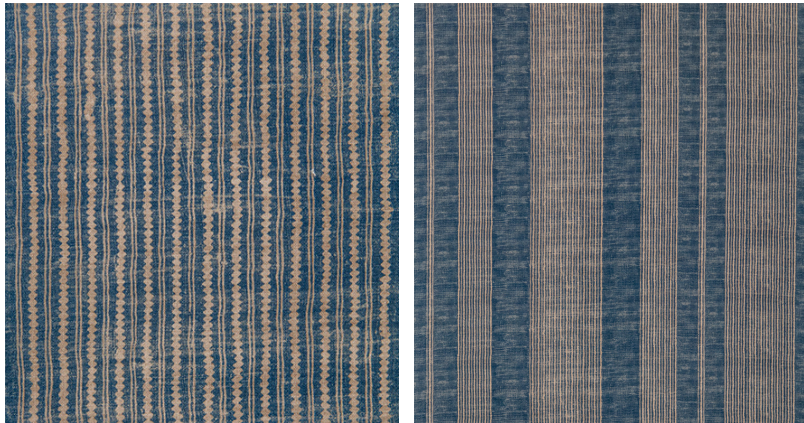


◆ ROBERT KIME ◆

HISHI BLUE

TBRK0919



Part of the Nara Collection, 'Hishi' or diamond was inspired by an antique scarf Robert and Tory found in Kyoto. 'Hishi' is known as an edible water plant in Japan, where the seed has a diamond shape. Also available in a gold colourway.

Material: 90% Cotton, 10% Linen

Width: Our fabrics are produced with a minimum of 2 cm selvedge on either side of the design., **Pattern**

Repeat: V: 23 cm (9 in) H: N/A , **Joining Width:** 137 cm (53.9 in) ,

Printed Width: 139 cm (54.7 in) ,