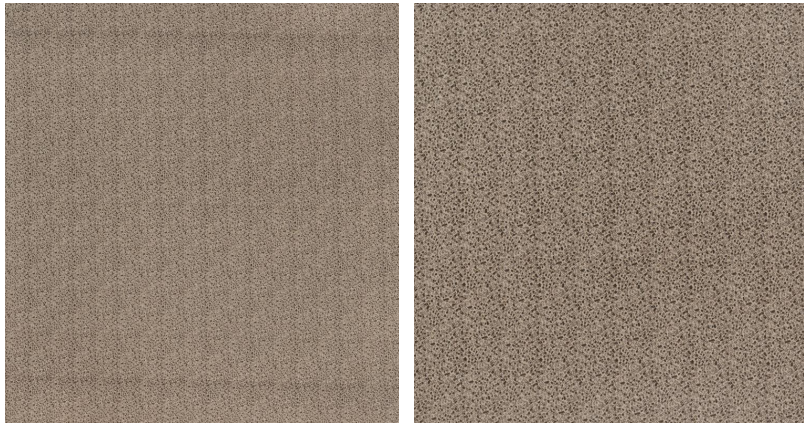


◆ ROBERT KIME ◆

HILL FLOWERS

0956



A delicate pattern adapted from an antique silk design from the archive, printed on a durable ramie backcloth extracted from the stalk of the Chinese nettle plant.

Due to the viscosity of the natural pigments used in its making, a subtle shadow may appear at the join.

Part of the Martinsell Collection, a small group of fabrics developed and designed in an environmentally conscious way and printed using natural pigments on regenerative backcloths.

Material: 72% Ramie, 28% Cotton

Width: Our fabrics are produced with a minimum of 2 cm selvedge on either side of the design, **Pattern**

Repeat: V: 15 cm (5.9 in), H: 15 cm (5.9 in), **Joining Width:** 136 cm (53.5 in) ,

Printed Width: 137 cm (53.9 in) ,