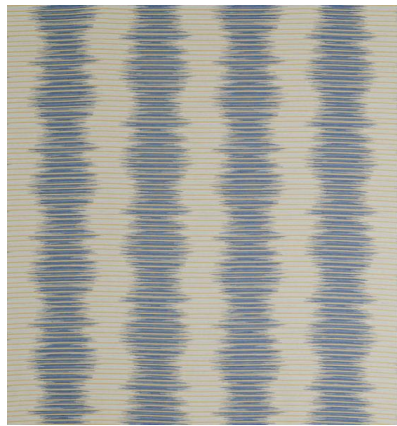


◆ ROBERT KIME ◆

FRENSHAM WEAVE

0931



Inspired by a boat ride on a river, with the motion of water and flashes of sunlight, this design is a finely detailed weave, and is reversible.

Material: 65% Cotton, 16% Viscose, 14% Wool

Width: 136.5 cm (53.7 in) , **Pattern Repeat:** V: 30 cm (11.8 in) H: 62.5 cm (24.6 in) , **Joining Width:** 132.5 cm (52.1 in) ,