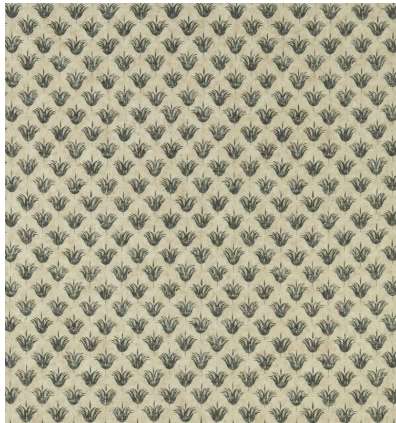


◆ ROBERT KIME ◆

ETRUSCO

0962



An interesting small-scale design combining European and Mughal references based on a 19th Century painted cabinet from Italy. Named after an Italian village and featuring a palmette style pattern representing the palm leaf or lotus flower. Also available as a silk and linen wallcovering.

Material: 100% Linen

Width: Our fabrics are produced with a minimum of 2 cm selvedge on either side of the design., **Pattern**

Repeat: V: 61 cm (24 in) H: 67.5 cm (26.6 in), **Joining Width:** 134 cm (52.8 in) ,