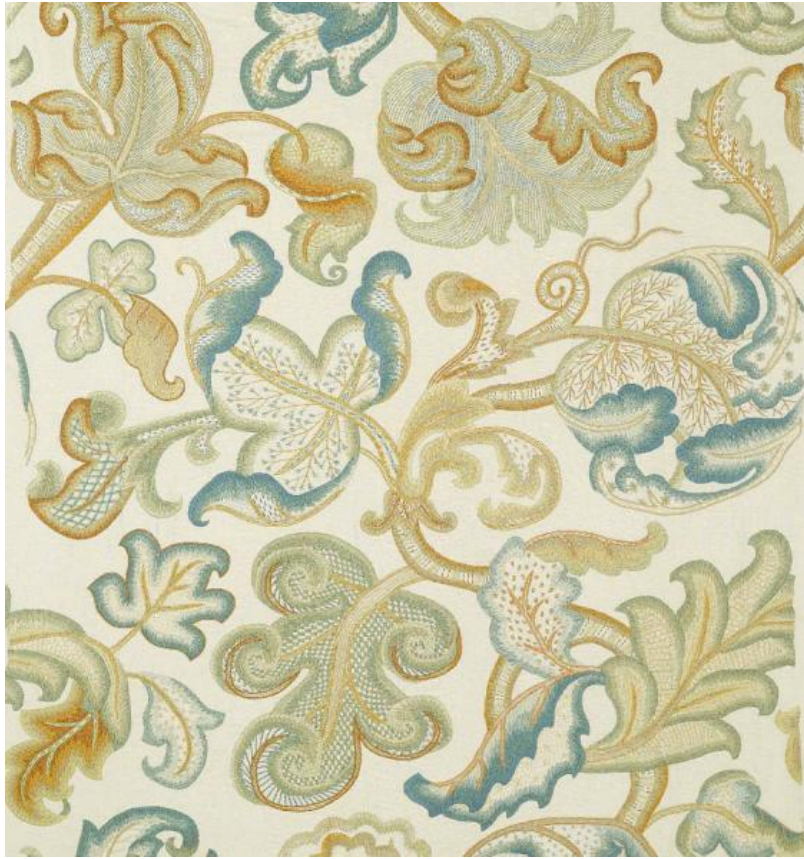


# ◆ ROBERT KIME ◆

## DUCHESS

CTFK109



A marvellous crazy C17th Tree of Life, recreated with some very unusual stitches. Found as a door curtain at Quenby hall in the 1970s. This fabric has an unusual repeat where the pattern is larger than the fabric width. It is designed in this way so that the pattern and aesthetics are not compromised by the size. Please contact a member of our team for any guidance in quantities required or joining instruction.

**Material:** 100% Linen

**Pattern Width:** 102cm/ 40.25 in , **Joining Width:** Please contact a member of our team , **Width:** 125cm/49.25 in ,

**Pattern Repeat:** 145cm/ 57 in ,