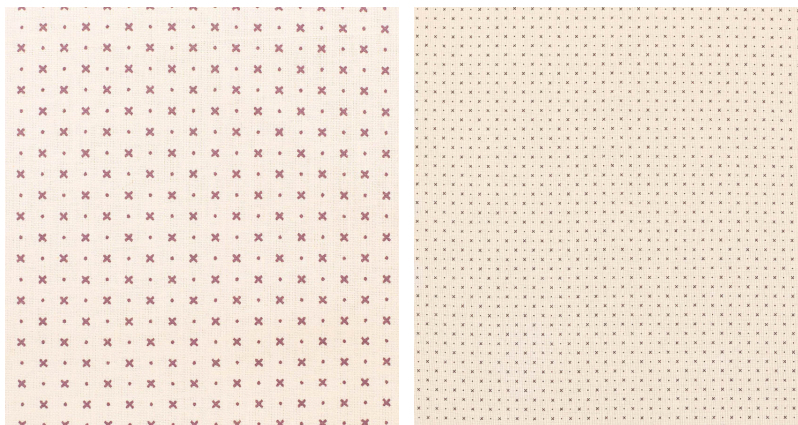


◆ ROBERT KIME ◆

DEVON LINING

0413F



Used as a lining for Devonshire and Derwent but can also be used as a facing fabric.

Material: 100% Cotton

Width: Our fabrics are produced with a minimum of 2 cm selvedge on either side of the design, **Joining Width:** 140 cm (55.1 in), **Printed Width:** 141 cm (55.5 in), **Pattern Repeat:** V: 1.5 cm (0.6 in) H: 1.5 cm (0.6 in),