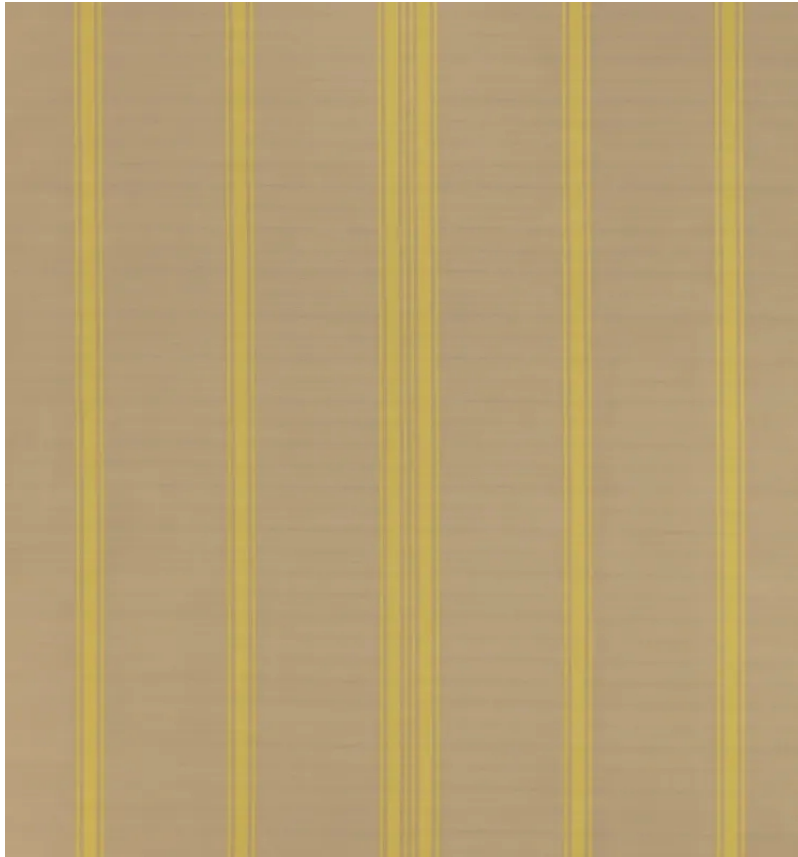


◆ ROBERT KIME ◆

DELAMAIN YELLOW

0468Y



A tailored silk and cotton reversible weave, can be used in conjunction with Damask Panel.

Material: 51% Silk, 49% Cotton

Width: 135 cm (53.1 in) , **Pattern Repeat:** V: N/A, H: 62.5 cm (24.5 in) , **Joining Width:** 125 cm (49.2 in) ,