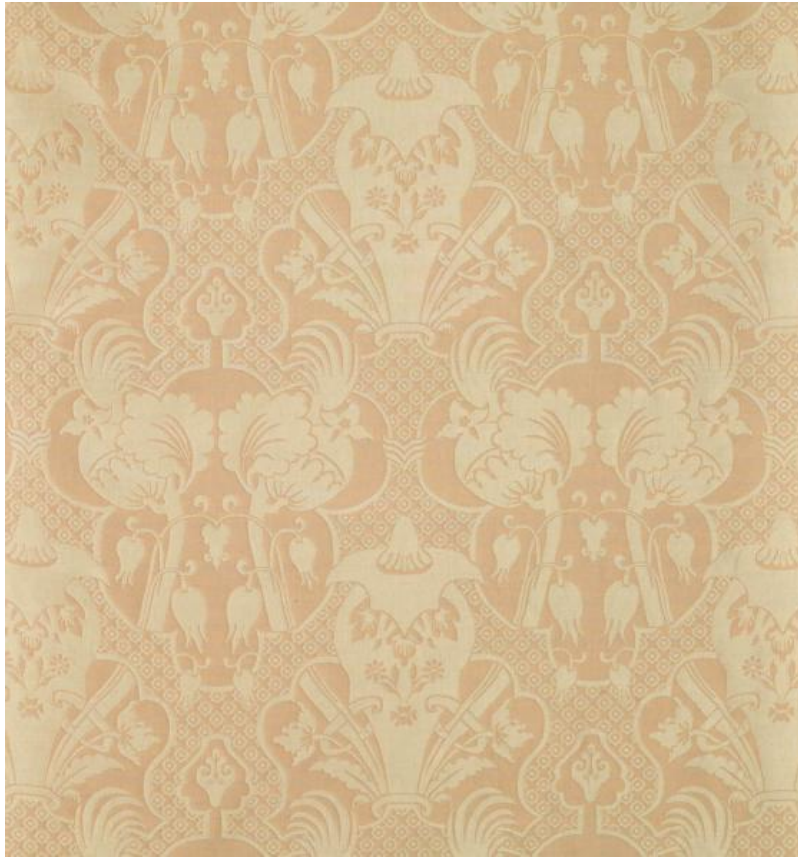


# ◆ ROBERT KIME ◆

## DAMASK PANEL OYSTER

0507



Originally woven in Lyon for the Turkish market, this design is influenced by an early 18th Century 'bizarre silk which were European textiles influenced by a mixture of Asian designs, including Turkish motifs.

**Material:** 100% Silk

**Width:** 133 cm (52.4 in), **Pattern Repeat:** V: 75.5 cm (29.7 in) H: 62.5 cm (24.6 in), **Joining Width:** 125 cm (49.2 in),