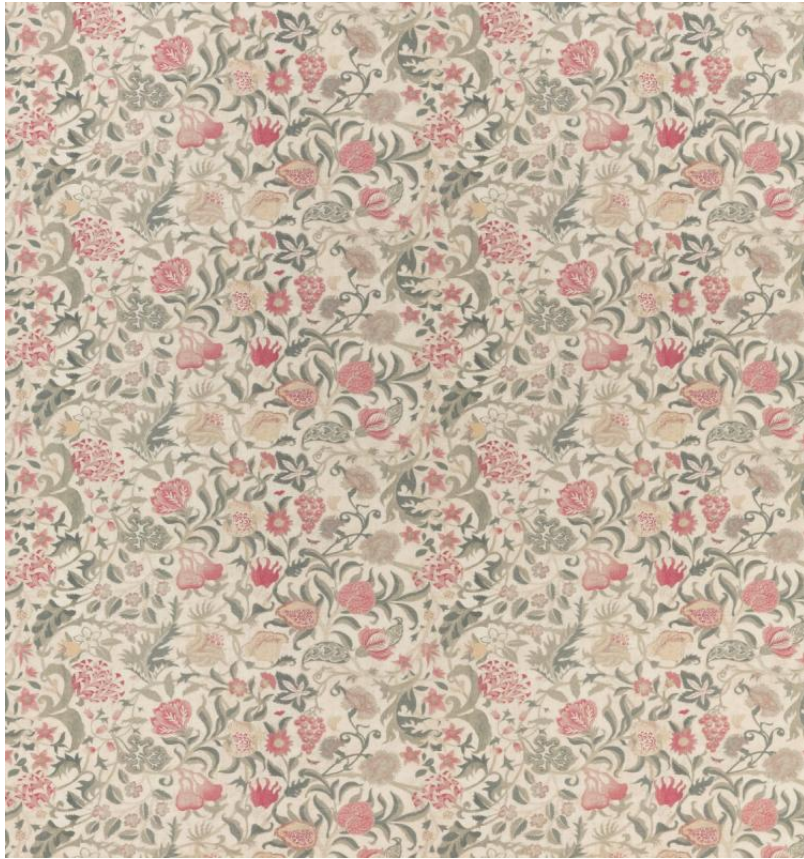


◆ ROBERT KIME ◆

CORY MINOR

0350B



Developed from a 17th Century fragment found on a cushion in a Devon manor house.

Material: 49 % Linen, 38% Cotton, 13% Nylon

Width: Our fabrics are produced with a minimum of 2 cm selvedge on either side of the design, **Pattern**

Repeat: V: 38 cm (15 in) H: 69 cm (27.2 in), **Joining Width:** 138.5 cm (54.5 in),

Printed Width: 140 cm (55.1 in),