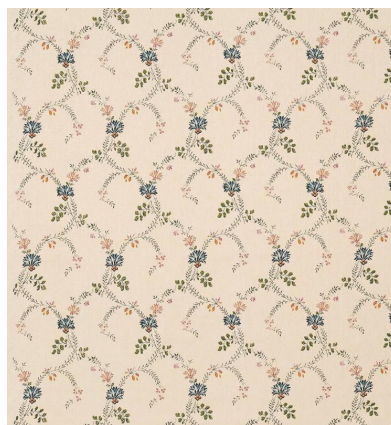


◆ ROBERT KIME ◆

CORNFLOWERS VOILE

0406



An Impressionistic translation from an 18th Century needlework onto linen printed to retain the impression of stitches.

Material: 100% Linen

Width: Our fabrics are produced with a minimum of 2 cm selvedge on either side of the design, **Pattern**

Repeat: V: 47 cm (18.5 in) H: 29.5 cm (11.6 in), **Joining Width:** 122 cm (48 in),

Printed Width: 134 cm (52.75 in),