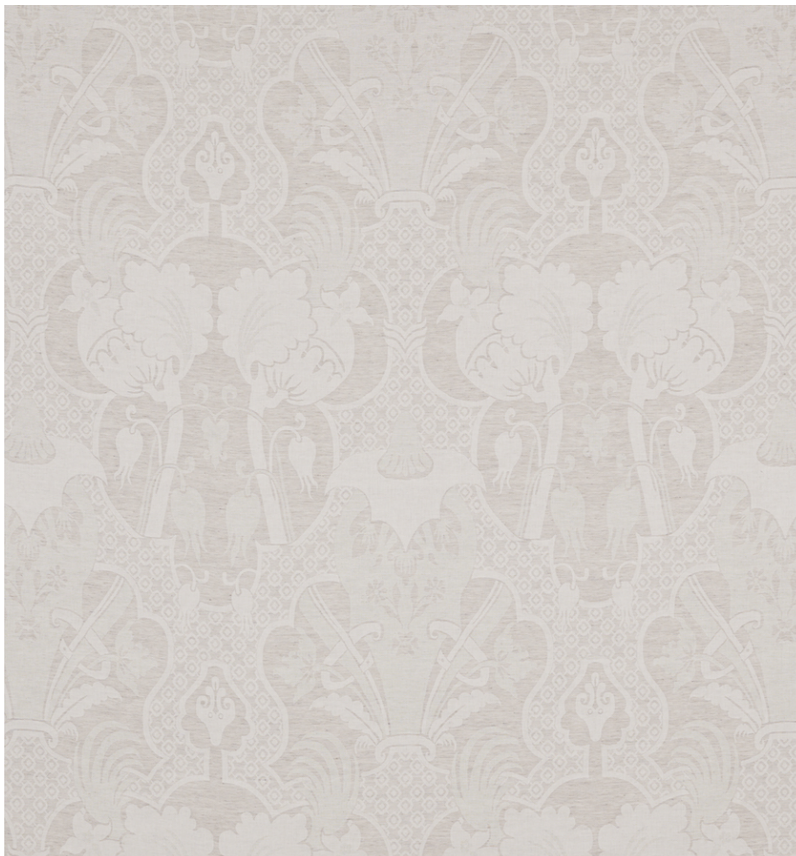




BY APPOINTMENT TO  
H. R. H. THE PRINCE OF WALES  
SUPPLIER OF  
ANTIQUE AND INTERIOR DECORATION

◆ ROBERT KIME ◆



Cora Voile  
0298

An unusual woven design taken from a fragment found in Robert's archives. The lightweight, finely woven sheer fabric is an adaptation and new take on the existing Cora linen.

Material: Cotton/ Wool/ Linen  
Width: 138.5 cm - 54 1/2 in  
Pattern Repeat: 91 cm - 35 13/16 in  
Joining Width: 128 cm - 50 3/8 in

---

LONDON SHOWROOM 190-192 Ebury Street London SW1W 8UP

[www.robertkime.com](http://www.robertkime.com)