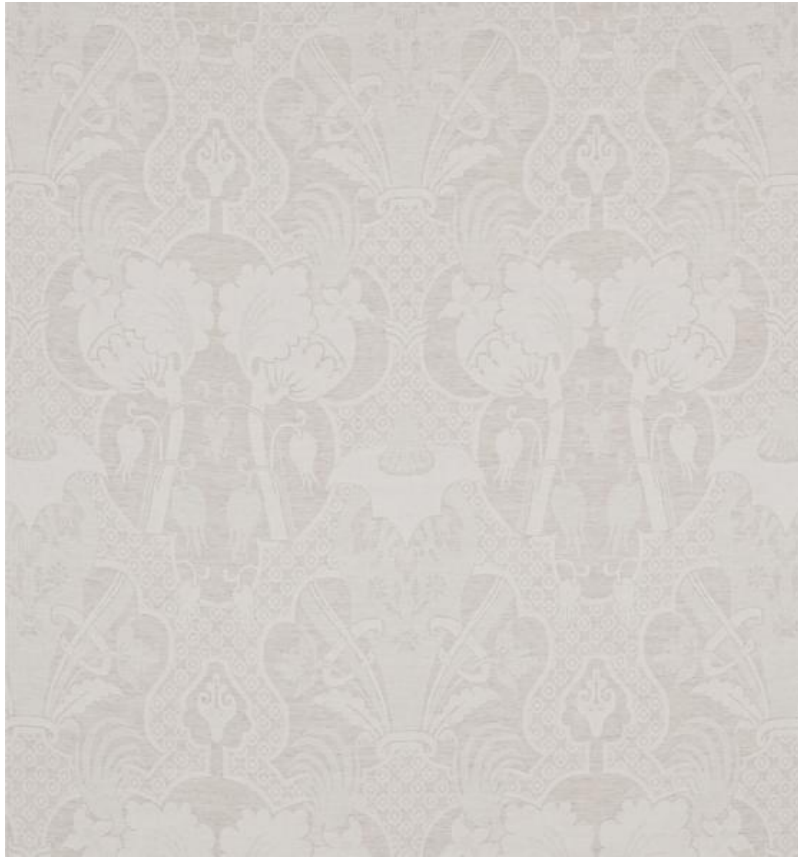


# ◆ ROBERT KIME ◆

## CORA VOILE

0298



An unusual woven design taken from a fragment found in Robert's archives. The lightweight, finely woven sheer fabric is an adaptation and new take on the existing Cora linen.

**Material:** 100% Linen

**Width:** 138.5 cm (54.5 in) , **Pattern Repeat:** 91 cm (35.8 in) , **Joining Width:** 128 cm (50.4 in) ,