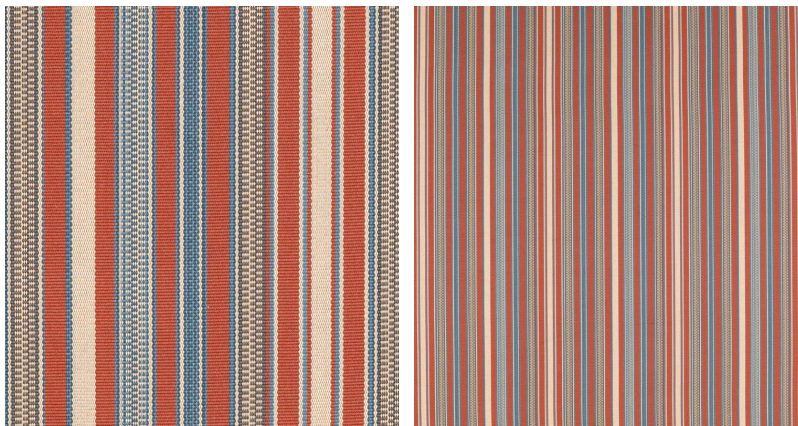


◆ ROBERT KIME ◆

CASPIAN

0428



Woven on a heavy cotton, this stripe was inspired by a central Asian weave found in Kyrgyzstan.

Material: 100% Cotton

Width: 139 cm (54.7 in) , **Pattern Repeat:** V: N/A H: 25 cm (9.8 in) , **Joining Width:** 136.5 cm (53.7 in) ,