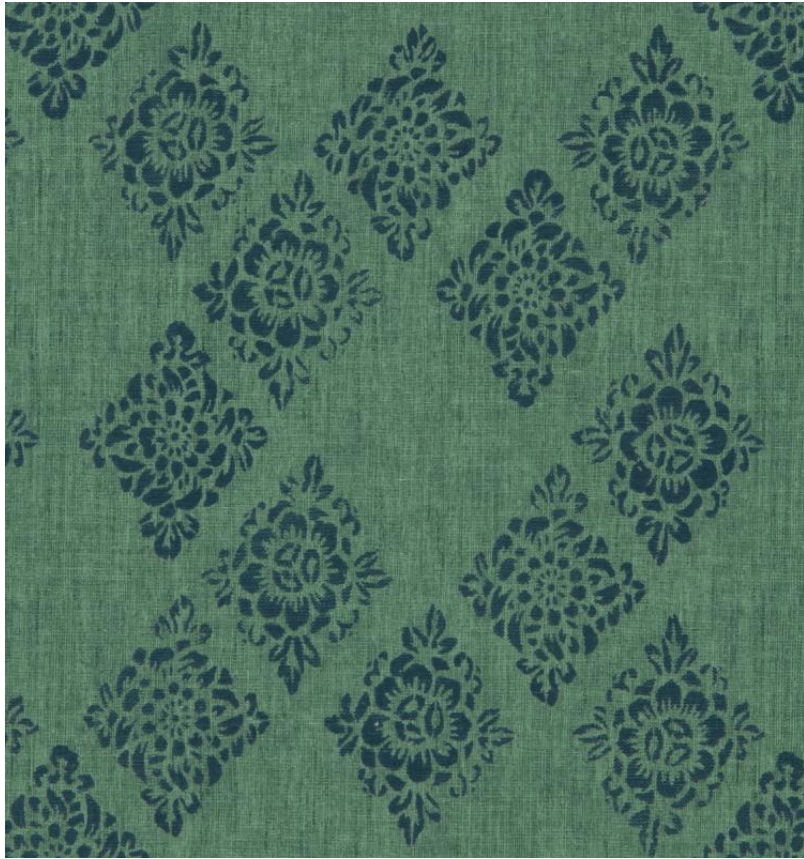


◆ ROBERT KIME ◆

BOTAN WALLCOVERING

0801



Meaning 'Peony' in Japanese, this bloom is often referred to as the King of Flowers. It symbolises wealth, prosperity and love in Japanese culture. Made as both a fabric and wallcovering, this pattern was based on a fabric found by Robert & Orlando on their trip to Japan in 2019. Also available as a cotton and linen fabric.

Material: 70% Linen, 30% Silk

Pattern Repeat: V: 28.7 cm (11.3 in) H: 24 cm (9.4 in) , **Pattern Width:** 124 cm (48.8 in) , **Joining Width:** 120 cm (47.2 in) ,