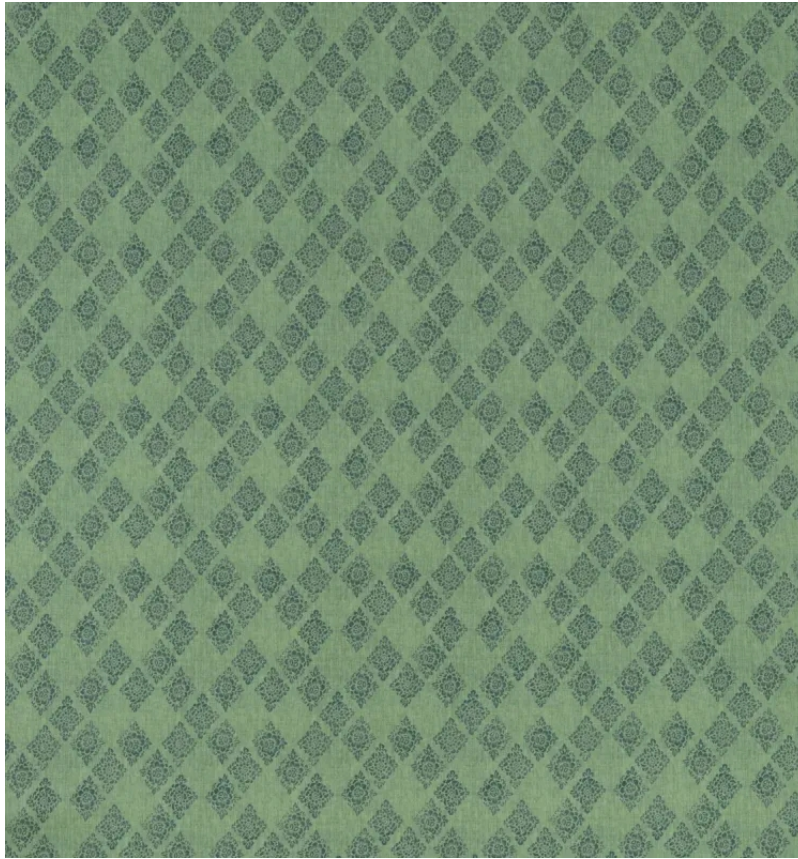


◆ ROBERT KIME ◆

BOTAN

0940



Meaning 'Peony' in Japanese, this bloom is often referred to as the King of Flowers. It symbolises wealth, prosperity and love in Japanese culture. Made as both a fabric and a wallcovering, this pattern was based on a fabric found by Robert and Orlando on a trip to Japan. Also available as a silk and linen wallcovering.

Material: 90% Cotton, 10% Linen

Width: Our fabrics are produced with a minimum of 2 cm selvedge on either side of the design, **Pattern**

Repeat: V: 26.5 cm (10.4 in) H: 22.5 cm (8.9 in), **Joining Width:** 136 cm (53.5 in),

Printed Width: 139 cm (54.7 in),