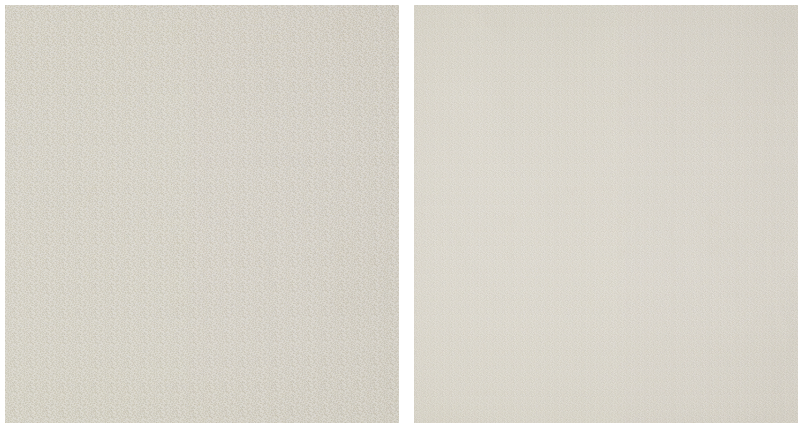


◆ ROBERT KIME ◆

BIRCH LINING

0513



A fine cotton lining. This pattern is inspired by intertwined birch branches, which evolve into a playful pattern.

Material: 100% Cotton

Width: Our fabrics are produced with a minimum of 2 cm selvedge on either side of the design, **Joining Width:** 141 cm (55.5 in), **Printed Width:** 141 cm (55.5 in),
Pattern Repeat: V: 5 cm (1.9 in) H: 3 cm (1.2 in),