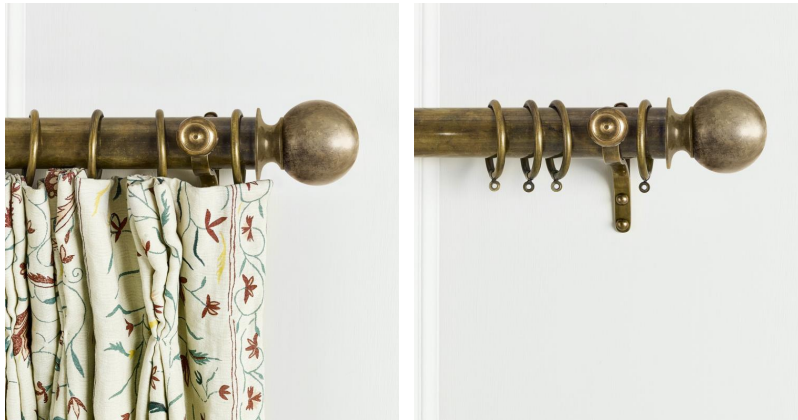


◆ ROBERT KIME ◆

BALL FINIAL IN ANTIQUE BRASS

CPEBFAB-X



Robert Kime Curtain Poles are based on document examples from the Robert Kime archive and are a classic approach to hanging curtains.

Our Curtain Pole system is a group of 4 elements - Pole, Brackets, Rings and Finials. Each element comes in three different sizes to accommodate either a 1.5", 2.0" or 2.5" curtain pole. Finials and rings are also available in three different sizes and are supplied in a 0.5" size larger than the pole diameter.

Antique brass finials are available in an Acorn, Fluted Pumpkin or Ball finial style.

The largest single run of curtain pole available is 2.6m due to shipping constraints, but longer runs are accommodated using our complimentary proprietary joining system.

The antique finish on our brass curtain pole and accessories was developed specifically for Robert and is applied by

hand. The product will continue to age and develop patina over time. Our curtain poles and accessories are also available in hand-finished oak.