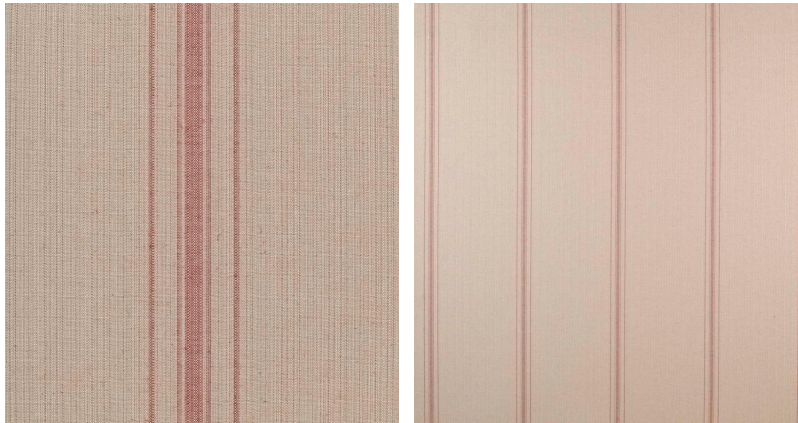
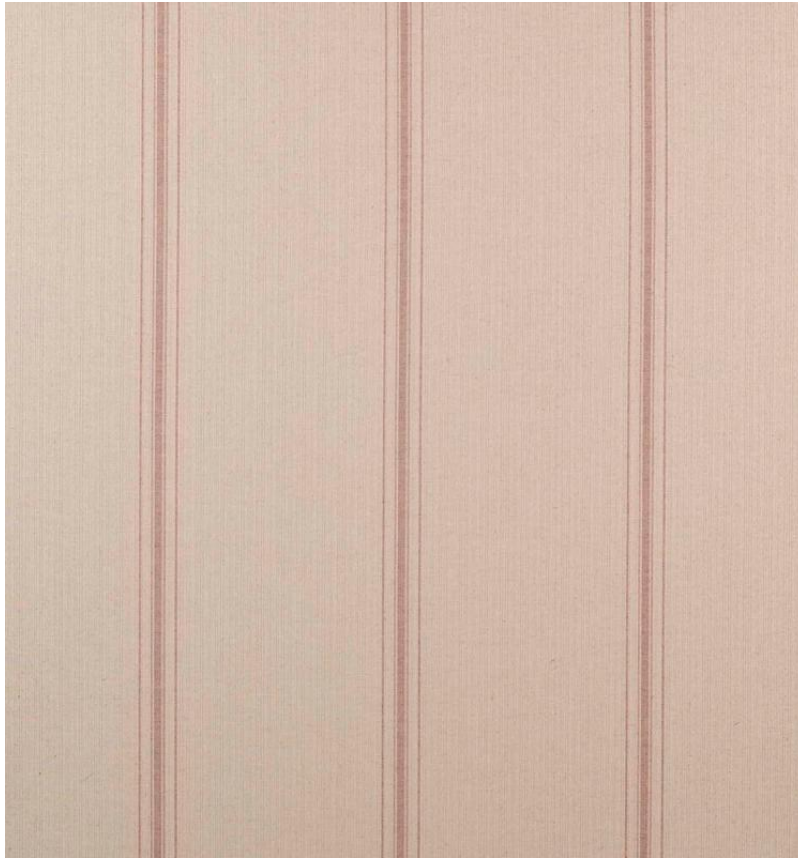


# ◆ ROBERT KIME ◆

## AVIGNON STRIPE RED

0588



A hard wearing weave that is also reversible, based on a simple but effective french linen design. Both sides can be used to good effect on the same piece of upholstery and accessories. Available in several colourways.

**Material:** 57% Viscose, 24% Cotton, 19% Flax

**Width:** 136 cm (53.5 in) , **Pattern Repeat:** V: N/A H: 31 cm (12.2 in) , **Joining Width:** 126 cm (49.6 in) ,