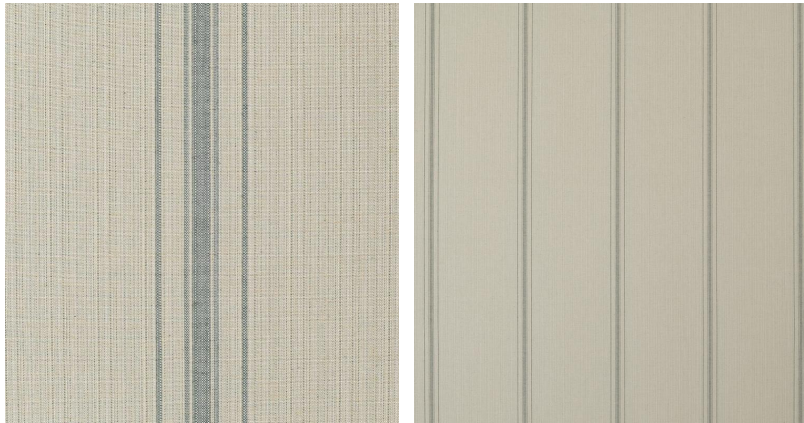
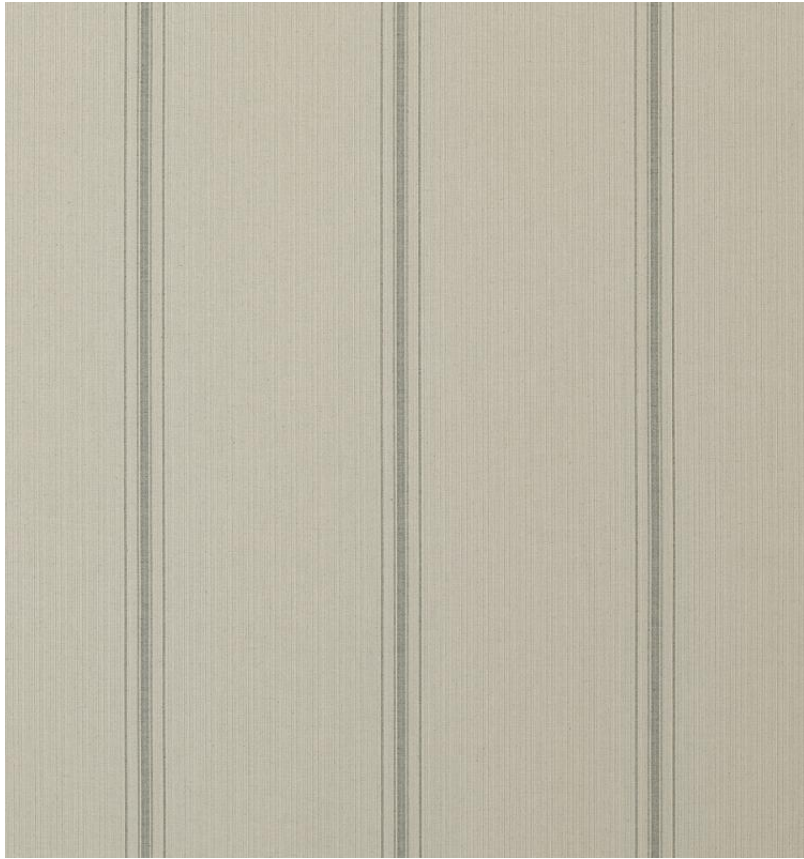


◆ ROBERT KIME ◆

AVIGNON STRIPE GREEN

0590



A hard wearing, reversible weave. Both sides can be used to good effect on the same piece of upholstery.

Material: 57% Viscose, 24% Cotton, 19% Flax

Width: 136 cm (53.5 in), **Pattern Repeat:** V: N/A H: 31 cm (12.2 in), **Joining Width:** 126 cm (49.6 in),