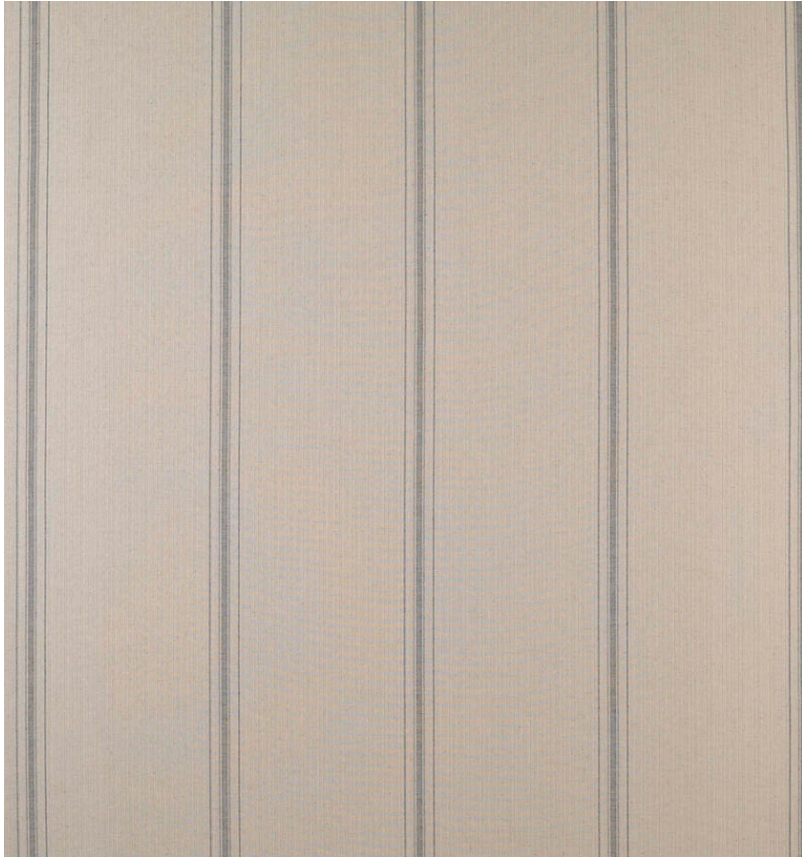




BY APPOINTMENT TO
H. R. H. THE PRINCE OF WALES
SUPPLIER OF
ANTIQUE AND INTERIOR DECORATION

◆ ROBERT KIME ◆



Avignon Stripe Blue - R0589

A hard wearing, reversable weave. Both sides can be used to good effect on the same piece of upholstery.

Material: Cotton/Viscose/Flax

Width: 136 cm - 53 9/16 in

Joining Width: 126 cm - 49 5/8 in

London Showroom

190-192 Ebury Street

London

SW1W 8UP

T: +44 (0)20 7831 6066

www.robertkime.com